

The Valuable
Chinese Art Collection
of the
Duke Tsia-Ho
(Manchu Dynasty)



Clarke's Art Rooms

5 West 44th Street, New York

Adjoining the Fifth Avenue Bank

1917





SMITHSONIAN
INSTITUTION

3133.



No. 600

ON FREE PUBLIC VIEW

BEGINNING MONDAY, JANUARY 29th, 1917
AND CONTINUING UNTIL DATE OF SALE

AT

CLARKE'S ART ROOMS

5 WEST 44th STREET, N.Y.

Adjoining the Fifth Avenue Bank

THE VALUABLE
CHINESE ART COLLECTION

OF THE

DUKE TSIA-PO

(MANCHU DYNASTY)

TO BE SOLD BY PUBLIC AUCTION

WITHOUT RESERVE

WEDNESDAY, THURSDAY, FRIDAY AND SATURDAY
January 31st and February 1st, 2nd and 3rd, 1917

Each Afternoon at 2.30 o'clock

THE ALEXANDER PRESS

114-116 West 27th Street

New York

CATALOGUE
OF THE
CHINESE ART COLLECTION

OF THE
DUKE TSIA-PO
(Manchu Dynasty)

COMPRISING
Rare and Costly Ceramics, of the early periods, Jades,
Crystals, Amethysts, Embroideries, Rugs, Paintings on Glass

ALSO
Stone Sculptures in Figures, Heads and Animals of extreme
interest to Connoisseurs, Museums and Collectors

TO BE SOLD BY PUBLIC AUCTION
WITHOUT RESERVE

WEDNESDAY, THURSDAY, FRIDAY AND SATURDAY
January 31st and February 1st, 2nd and 3rd, 1917

Each Afternoon at 2.30 o'clock

THE SALE WILL BE CONDUCTED BY
MR. AUGUSTUS W. CLARKE

CONDITIONS OF SALE.

1. The highest bidder to be the Buyer, and if any dispute arise between two or more bidders, the lot so in dispute shall be immediately put up again and resold.

2. The purchasers to give their names and addresses and to pay down a cash deposit of not less than one-third, or the whole of the purchase money, *if required*, in default of which the lot or lots so purchased to be immediately put up again and resold.

3. The lots to be taken away at the buyer's expense and risk within 24 hours from the conclusion of the sale and the remainder of the purchase money to be absolutely paid or otherwise settled for to the satisfaction of the Auctioneer, on or before delivery; in default of which the undersigned will not hold himself responsible if the lots be lost, damaged or destroyed, but they will be left at the sole risk of the purchaser.

4. The lots to be taken away and paid for, whether genuine and authentic or not, with all faults and errors of description, at the buyer's expense and risk; A. W. Clarke not being responsible for the correct description, genuineness or authenticity of, or any fault or defect in any lot, and making no warranty whatever.

5. To prevent inaccuracy in delivery and inconvenience in settlement of the purchases, no lot can on any account be removed during the sale.

6. If, for any cause, an article purchased cannot be delivered in as good condition as the same may have been at the time of its sale, or should any article purchased thereafter be stolen or misdelivered, or lost, the undersigned is not to be held liable in any greater amount than the price bid by the purchaser.

7. Upon failure to comply with the above conditions, the money deposited in part payment shall be forfeited; all lots uncleared within the time aforesaid shall be resold by public or private sale, without further notice, and the deficiency, if any, attending such resale, shall be made good by the defaulter at this sale, together with all charges attending the same. This condition is without prejudice to the right of the Auctioneer to enforce the contract made at this sale, without such resale, if he thinks fit.

A. W. CLARKE is in no way responsible for the charges or manner of delivery of goods purchased at this sale.

AUGUSTUS W. CLARKE, Auctioneer,

5 West 44th Street, N. Y. City.

Telephone 4029 Bryant.

017.37
.T88 ✓



No. 199

CATALOGUE

FIRST DAY'S SALE

WEDNESDAY, JANUARY 31st, 1917

At 2.30 o'clock P. M.

1 Remarkable Porcelain Dog (Yung Ching)

Hard white porcelanous. Strongly modelled seated dog, open mouth, prominent teeth, with head on one side, staring round eyes. Coated with a thick brilliant light blue glaze.

Height, $7\frac{3}{4}$ inches.

2 Porcelain Dog Fu (Ming)

Modeled with open mouth and the characteristic glaring expression. (The movable ball which slides on a post under one paw is missing). On the back a taper holder topped by a lotus flower. Covered with a brilliant transmutation glaze showing splashing and feathering of yellowish, turquoise blue and dark aubergine.

Height, $8\frac{1}{4}$ inches.

3 Decorated Famille Rose Bowl (Chien Lung)

In graceful gourd shape. Sonorous thin white porcelain, beautifully coated with light blue ground, and delicately pencilled with tiny designs, in brilliant enamel colors of the famille rose. Underneath bears a mark of its period.

Height, $3\frac{1}{2}$ inches; diameter, $7\frac{1}{4}$ inches.

First Afternoon

4 Fish-roe Green Flower Pot (Ming)

Hard heavy pottery ware. Flattened oviform body, high foot, low neck and wide mouth. Body boldly covered with brilliant fish-roe (so-called by Chinese), and minutely crackled, and the glaze carried to underbase.

Height, $4\frac{1}{2}$ inches; diameter, 7 inches.

5 Rare and Important Jar (Sung)

Ovoid body, short neck, open mouth and slightly spreading base. Hard dark buff stoneware, with a coating of greenish yellow glaze.

Height, $8\frac{3}{4}$ inches; diameter, $6\frac{1}{2}$ inches.

6 Pair of Kylins with Cubs (Ming)

Hard, sonorous, porcelanous, covered in brilliant enamel colors of the aubergine, turquoise blue and yellow. These mythical lions are called "Dogs of Fu," being the guardians of Buddhist temples and images. Have open mouths, prominent teeth, scroll-like form of hair. The animals are seated on their haunches, with two cubs, and on the back a taper holder. (The movable ball which slides under a paw is missing).

Height, $6\frac{1}{2}$ inches.

7 Kao Yao Jar (Ming)

Graceful ovoid body, with two handles on the rim, a band round the body. Hard, heavy, porcelanous, coated in thick yellowish glaze and faintly crackled. The ground is beautifully decorated with eight bold horses in varying types and of different colors.

Height, $4\frac{1}{4}$ inches; diameter, $5\frac{1}{4}$ inches.

8 Famille Rose Tea Cup with Cover (Chien Lung)

Shallow body, broad foot and deep expanding mouth, with dome cover; cover and body are beautifully painted with children playing "New Year Day," in the brilliant enamel colors of the famille rose.

Height, $3\frac{1}{4}$ inches; diameter, $4\frac{3}{4}$ inches.

9 Flambe Vase (Chien Lung)

Graceful form. Vibrant porcelain, coated with a creamy white glaze with café au lait crackle, which appears in various places, thick glaze of various reds, copiously splashed with rich brown, gray and a feathery blue.

Height, $4\frac{1}{2}$ inches; diameter, 3 inches.

10 Delicate Yellowish Bottle (Chien Lung)

Hard, sonorous, porcelanous. Globular body, tapering neck and expanding mouth. Body boldly coated with yellowish glaze and faintly crackled.

Height, $5\frac{3}{4}$ inches; diameter, $3\frac{1}{2}$ inches.

11 Unique Yi-Hsing Jardiniere (Ming)

Blue clay which burns brown and hard, like stoneware. Covered with brilliant thick, clear glaze, with flambé variation of delicate pearly gray tint, and minutely crackled. Highly prized by Chinese connoisseurs and collectors.

Diameter, $7\frac{1}{4}$ inches.

12 Rare and Important Pottery Jar (Han)

Flower basket shape, oviform body, low neck and open mouth. Hard, heavy stoneware and unglazed. Bears a special mark on the rim of its owner's name.

Height, 10 inches; diameter, $8\frac{1}{2}$ inches.

13 White Porcelain Jar (Chien Lung)

An unusual shape, sonorous thin paste of exceedingly fine quality. Whole body coated in rich and brilliant white glaze.

Height, $3\frac{1}{2}$ inches; diameter, $2\frac{1}{2}$ inches.

14 Pair of Porcelain Figures (Chien Lung)

Sonorous thin paste. The figures are standing, being the guardians of Buddhist temples and images, holding peaches in their hands, and wearing yellowish robes, decorated with blossoming flowers. All painted in the brilliant enamel colors of the famille verte, and exquisitely modelled.

Height, 8 inches each.

First Afternoon

15 Large Celadon Plate (Ming)

Shallow body, broad foot, delicate petal design on the border. Coated in rich and brilliant celadon glaze.

Diameter, $11\frac{1}{2}$ inches.

16 Pair of Fu Dogs (Chien Lung)

These mythical lions are called "Dogs of Fu," being the guardians of Buddhist temples and images. Have open mouths, prominent teeth, long manes, and taper holders on their backs. Glazed in enamel colors of the famille rose.

Height, $4\frac{1}{4}$ inches; diameter, $3\frac{1}{2}$ inches.

17 Remarkable Vase (Han)

Small, octagonal, pear-shaped vase with short neck. Light gray clay burned brown, and unornamented. A piece of graceful shape. Height, $10\frac{1}{2}$ inches; diameter, $6\frac{3}{4}$ inches.

18 Flambe Bottle-Shaped Vase (Yung Ching)

Flattened ovoid body, sloping shoulder, broad foot and slight mouth. Dense porcelain, covered with a luminous red glaze of Sang de Boeuf, flecked and splashed with delicate bluish and greenish grays, with café au lait crackle. The glaze carried in interior of neck and underbase.

Height, $10\frac{3}{4}$ inches; diameter, $8\frac{1}{2}$ inches.

19 Pottery Figure of Kuan-Yin (Ming)

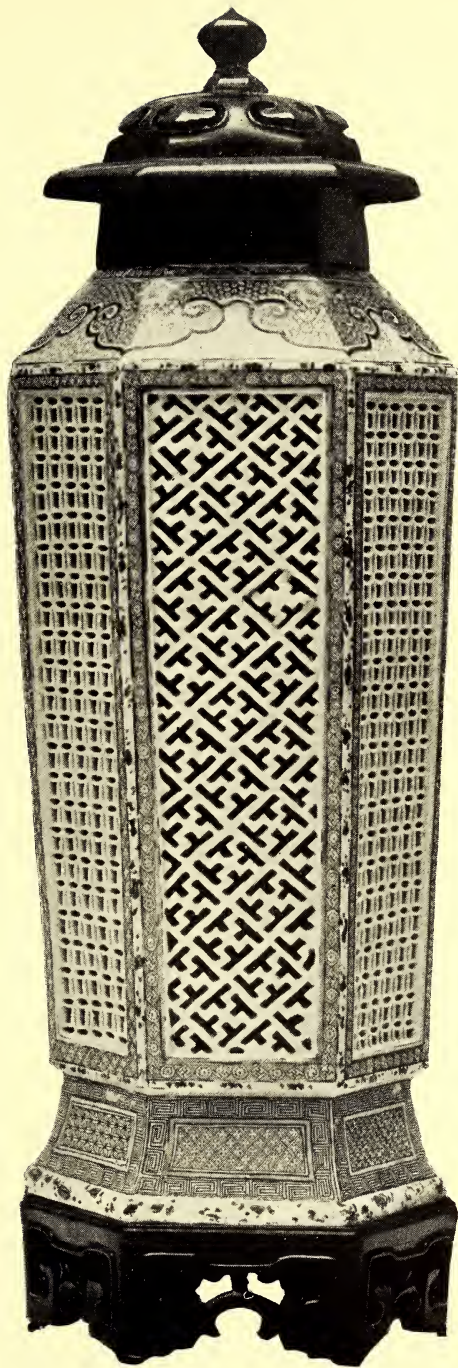
Hard, heavy pottery, covered with brilliant and even turquoise blue, dark aubergine and light yellowish glaze. The Goddess of Charity and Mercy, seated on a rock, vigorously modelled; the head has a cowl.

Height, $10\frac{1}{4}$ inches.

20 Remarkable Pillow (Sung)

The top pencilled with four characters, meaning "May the life be long and peaceful." Hard, sonorous, white, porcelainous, covered with thick creamy white glaze and minutely crackled.

Height, $2\frac{1}{2}$ inches; width, 6 inches.



No. 240

21 Statuette of Wen Chang (Ming)

Hard, heavy stoneware. The god is for passing the examination in arts. He is seated in a shrine, with hands against girdle, a stern face, head covered with a crown. The flowing robes are boldly and skillfully modelled. All in the enamel colors of transparent turquoise blue, dark aubergine and thick yellow, and the face and hands delicately pencilled in gold. Height, 10 inches.

22 Yi-Hsing Gray Vase (Ming)

Rectangular form, with pear-shaped outline and wide mouth; round tubular handles. Blue clay which burns brown and hard, like stoneware, covered with brilliant thick, clear glaze with flambé variation of delicate pearly gray tint.

Height, $8\frac{1}{4}$ inches; width, 6 inches.

23 Remarkable Vase (Sung)

Of oval form with small neck and low, cup-shaped mouth. Gray, hard, porcelaneous ware of fine texture. Covered with cream buff glaze and minutely crackled.

Height, $11\frac{1}{2}$ inches; diameter, $8\frac{3}{4}$ inches.

24 Three Decorated Tea Cups of Exceptional Merit (Yung Ching)

Deep body, broad foot and spreading mouth. Of graceful outline and finished technique. Of fine quality thin, white, sonorous porcelain. Artistically decorated with blossoms painted in natural colors, exquisitely executed in enamel of the famille rose, enhanced by gilding.

Height, 2 inches; diameter, $3\frac{1}{2}$ inches.

25 Pottery Standing Rooster (Ming)

Hard, heavy, reddish brown clay. Statuette of a large rooster standing upright on a rock, his head erect and tail curling upward. Beautifully glazed in brilliant thick enamel colors of turquoise blue, reddish and yellow. Rocks with traces of painting; the glaze has disappeared.

Height, $11\frac{1}{2}$ inches.

First Afternoon

26 Rare and Unique Jar (Sung)

Ovoid body, short neck and open mouth. Reddish buff stoneware, covered with transparent brown glaze. It was recently excavated.

Height, $12\frac{1}{2}$ inches; diameter, $9\frac{1}{4}$ inches.

27 Large Glass Vase (Chien Lung)

An unusual shape. With old yellow and coral red glass carved in high relief.

Height, $9\frac{1}{2}$ inches; diameter, 3 inches.

28 Rare and Important Jar (Han)

Hard, grayish white stoneware fired dark reddish brown. Flattened oviform body, wide mouth, curious decoration with two small ornaments on the rim, and with three bands on the body, in a conventional pattern. With no trace of glazing.

Height, $3\frac{1}{2}$ inches; diameter, 7 inches.

29 Statuette of God Fu (Yung Ching)

Hard, dense porcelanous ware. Strongly modelled statuette of a seated Dog Fu, with feathering furs on the whole body, curling tail, staring eyes, wide mouth and prominent teeth. Glazed in brown yellowish coloring. Very rarely obtained in such perfect condition.

Height, $3\frac{3}{4}$ inches.

Height, $3\frac{3}{4}$ inches.

30 Drying Flower Burner (Chien Lung)

Flattened ovoid body with dome cover; the cover filled with numerous tiny holes in petalous shape. Body and cover are boldly coated in famille verte, and beautifully pencilled with blossom flowers and storks.

Height, $4\frac{3}{4}$ inches; diameter, $6\frac{1}{2}$ inches.

31 Unique Jar (Sung)

Ovoid body, short neck and open mouth. Grayish white, hard, heavy, porcelanous ware, coated in thick, brilliant, creamy buff glaze and finely crackled.

Height, $9\frac{3}{4}$ inches; diameter, $7\frac{3}{4}$ inches.

32 Fukien Porcelain of Kuan-Yin with Infant (Ming)

Fukien translucent porcelain, with light creamy white glaze, blanc de chine. The Goddess of Charity or Mercy to whom childless women pray. She is seated on a lotus base, with the child, vigorously modelled. Head has simple coiled hair with cowl covering; hands and fingers are very delicate. A fine and well modelled group. Height, 10 inches.

33 Unique Teapot with Stove (Chien Lung)

Hard, sonorous, white porcelain. Both in quadrilateral shapes, the teapot coated with thick, brilliant coral red glaze, and exquisitely pencilled bamboos and chrysanthemum flowers, all in enamel colors of the famille verte, and the charcoal stove in greenish glaze with delicate open work.

Height, with stove, $10\frac{1}{2}$ inches.

34 Pair of Kylins (Ming)

Modelled with open mouth and characteristic glaring expression, seated on their haunches. One is a mother Kylin with a cub climbing over her hip, and the other on the ball post. (The movable ball which slides on the post is missing). Covered with a brilliant transmutation glaze showing splashings and featherings of sundry grays, blues and aubergine. Height, $7\frac{3}{4}$ inches.

35 Bronze Figure Paper Weight (Ming)

Strongly molded sleeping lady lying on a leaf, holding a wine cup in her right hand. Width, $4\frac{1}{2}$ inches.

First Afternoon

36 Rare and Important Jar (Han)

Full globular body, broad foot with expanding mouth, and with two loose ears on neck. Hard, gray stoneware, covered with iron red and colorless, transparent glaze. Curious decoration with conventional zigzag patterns over the whole body. Height, $9\frac{1}{2}$ inches; diameter, 11 inches.

37 Statuette of Kuan-Yin (Ming)

Hard, grayish buff pottery. Goddess is shown with the legs crossed under flowing robes, which conceal the hands and expose part of the breast. The hair is dressed high on the head and covered with a cowl; the beautiful face is left unglazed, with a wonderfully even, clear and brilliant lapis lazuli, aubergine and dark yellowish glaze.

Height, $16\frac{1}{2}$ inches.

38 Rare and Important Bronze Unicorn (Ming)

Seated unicorn, with fierce countenance, open mouth, prominent teeth, and spreading tail, with head erect. Fine and strongly modelled. Height, 12 inches.

39 Rare and Important Vase (Yuen)

Slender, oval form, with short neck and expanding mouth and base; on the neck are two swimming fishes which serve as handles. Hard, gray stoneware, covered with a transparent, thin glaze of iron red, and flange projecting at the foot. An interesting specimen, worthy the attention of museums and collectors.

Height, $10\frac{1}{4}$ inches; diameter, $5\frac{1}{2}$ inches.

40 Wooden Figures (Chien Lung)

Carved in deep high relief, two "Happy Fairies" holding instruments. The robes are in simple yet effective folds. Finely painted in reddish color and gold.

Height, $11\frac{1}{4}$ inches.

41 Porcelain Figure (Chien Lung)

Of sonorous, thin paste. The standing figure exquisitely modelled, with smiling face, holding a ju-i and wearing a green cloth, decorated with crackling ice patterns, the trousers glazed in coral red, in enamel colors of the famille rose.

Height, $7\frac{1}{2}$ inches.

42 Decorated Bottle (Yung Ching)

Of hard, sonorous porcelain, beautifully decorated in brilliant enamel colors of famille verte. The embellishment consists of peonies and flowers in natural colors.

Height, $8\frac{1}{4}$ inches; diameter, $3\frac{1}{2}$ inches.

43 Five-Color Vase (Yung Ching)

Hard, white, porcelaneous, beautifully decorated with blossoms, flowers and rocks in richest five-color glaze.

Height, $7\frac{3}{4}$ inches; diameter, $2\frac{1}{2}$ inches.

44 Remarkable Vase (Sung)

Baluster form, with high shoulders and small, spreading neck. Of reddish buff clay, covered with thick, warm, creamy white glaze, finely crackled.

Height, $11\frac{1}{4}$ inches; diameter, $8\frac{1}{2}$ inches.

45 Bronze Vase (Ming)

Small, fluted vase, with pear-shaped body and spreading neck, two square tubular handles, body boldly ornamented with Chou bronze design. A graceful and delicate form.

Height, $10\frac{1}{2}$ inches; width, 6 inches.

46 Enamel Teapot (Chien Lung)

Peking enamel on copper. Graceful form, molded in six shaped lobes and flanged at the shoulder with six foil rim, and with dome cover, long handle and short spout. Body beautifully decorated with blossoms and spreading branches exquisitely pencilled in the brilliant enamel colors of famille verte.

Height, $6\frac{1}{2}$ inches.

First Afternoon

47 Fancy Fish-roë Vase (Yung Ching)

Bottle shaped, without neck. Hard, white, porcelanous, covered with brilliant green glaze (called by Chinese "fish-roë") of even color and purity, and minutely crackled.

Height, $5\frac{3}{4}$ inches; diameter, $4\frac{1}{4}$ inches.

48 Pottery Standing Eagle (Ming)

Hard, heavy pottery, glazed in blackish brown white on feathers. Bird stands on a rock, its head erect, sparkling eyes and hooked bill, well modelled. An interesting specimen.

Height, $9\frac{1}{4}$ inches.

49 Fancy White Porcelain Vase (Chien Lung)

Graceful form, long body, slender base and spreading mouth. The whole body beautifully decorated with chrysanthemums and other fancy designs, coated in a single color of brilliant pure white glaze.

Height, $5\frac{1}{4}$ inches; diameter, 4 inches.

50 Extraordinary Pottery Jar (Han)

Oviform jar with original dome cover; cover and body in hard, gray stoneware, coated with transparent, thick yellowish glaze and beautifully decorated with sprays of chrysanthemums and spreading branches. All exquisitely executed in brilliant enamel colors of buff white and greenish glazes. Rarely to be obtained, and worthy the attention of museums and collectors. Height, $8\frac{1}{2}$ inches; diameter, $7\frac{3}{4}$ inches.

51 Blue and White Vase (Kang Hsi)

Round, high body, spreading and broad base. Hard, white, porcelanous, coated with a brilliant cobalt blue, beautifully decorated with sprays of mei trees, which issue from the rock base; overhead are flying butterflies, artistically painted and richly glazed.

Height, $6\frac{3}{4}$ inches; diameter, $4\frac{3}{4}$ inches.

52 Kao Yao Jar (Ming)

Oviform, short neck, broad foot and open mouth. Body coated in deep sky blue glaze with faint crackles.

Height, $9\frac{1}{4}$ inches; diameter, $7\frac{1}{2}$ inches.

53 Sang de Boeuf Vase (Chien Lung)

Graceful oviform body, wide, short neck. Hard, white porcelain, covered in rich, brilliant Sang de Boeuf transparent glaze. Height, $8\frac{1}{2}$ inches; diameter, $5\frac{1}{4}$ inches.

54 Blue and White Small Jar (Chien Lung)

Thin, white, hard paste, of exceedingly fine quality. Beautiful decoration of flowers and arabesque leaves in brilliant cobalt blue glaze. Height, $4\frac{1}{4}$ inches; diameter, 4 inches.

55 Large Fish-roe Vase (Chien Lung)

Deep oviform body, broad shoulder and slightly short neck. Hard, heavy, porcelaneous ware, the whole body covered with fish-roe glaze (so-called by Chinese), and faintly crackled. The base is also glazed.

Height, $9\frac{1}{4}$ inches; diameter, $4\frac{3}{4}$ inches.

56 White Porcelain Bottle (Chien Lung)

Bottle shape, single color of brilliant white glaze all over the body. Height, $6\frac{3}{4}$ inches; diameter, $3\frac{1}{2}$ inches.

57 Remarkable Jar (Han)

Hard, buff stoneware, coated in blackish glaze, the body unornamented. The jar has been burned in the firing, causing an uneven glaze.

Height, $6\frac{3}{4}$ inches; diameter, $8\frac{1}{4}$ inches.

First Afternoon

58 T'u Ting Yao Kuan-Yin (Sung)

Dense, buff, porcelanous, yellowish glaze minutely crackled, smoky brown stain; is rare and represents Kuan-Yin. The goddess is seated on a rocky pedestal, holding a sacred pearl in her right hand, and by her side a bundle of books. The face has a fine expression, and her hair is dressed low with a tiara and cowl covering. At base of pedestal are two dragons twining round the rock and lotus flowers.

Height, 15 inches.

59 Famille Rose Vase (Chien Lung)

Of graceful hexagonal form, thin, fine paste, coated green ground. Finely painted in brilliant enamel colors of famille rose.

Height, $6\frac{1}{4}$ inches; width, $3\frac{1}{4}$ inches.

60 Fancy Small Yellow Bottle (Chien Lung)

Globular body, slightly tapering neck. Hard, sonorous paste, body covered in brilliant lemon yellow glaze.

Height, $5\frac{1}{2}$ inches; diameter, $3\frac{1}{4}$ inches.

61 Remarkable Jar (Han)

Flattened ovoid body, broad foot, short neck and wide mouth. Hard, heavy, reddish buff stoneware, body covered with turquoise blue glaze, parts of which have disappeared.

Height, 6 inches; diameter, 8 inches.

62 Remarkable Pottery Eagle (Ming)

Of reddish brown, heavy clay. Strongly modelled, an eagle stands on a rock, with head erect and tail downward. Coated with a thick, brilliant aubergine and yellowish.

Height, 11 inches.



No. 275

63 Bronze Buddha (Ming)

The deity is seated on a lotus flower base in a proud attitude, with richly ornamented crown. The robes are exquisitely modelled and boldly gilded in golden colors.

Height, 9 inches.

64 Unique Vase (Ming)

Rectangular form, with pear-shaped outline and wide mouth, two square tubular handles. The body is a thick, light bluish glaze, hard texture, sparsely crackled; the glaze is carried inside neck and underbase.

Height, $11\frac{1}{2}$ inches; width, $6\frac{1}{2}$ inches.

65 White Porcelain Jar (Chien Lung)

Ovoid, long body, broad foot and short neck. Of thin, white, porcelaneous ware, the whole body coated in brilliant single color of white glaze.

Height, $5\frac{1}{4}$ inches; diameter, 4 inches.

66 Delicate Bowl (Chien Lung)

Hard, sonorous, white porcelain. Finely modelled in the shape of a lotus leaf with twisted stalk, elaborately lined. Entirely coated with a thin, liquid, highly polished glaze of a wonderful tone of the pea green color; interior and exterior are beautifully decorated with blossoms, season flowers and various kinds of summer insects painted in the enamel colors of famille rose and delicately pencilled in gold. An exceptional form of fine quality.

Height, $2\frac{1}{2}$ inches; diameter, $6\frac{1}{4}$ inches.

67 Pottery Flower Pot (Ming)

Graceful form in the petal shape, deep body and wide mouth. Hard, heavy, grayish buff stoneware, body boldly coated with turquoise blue glaze and minutely crackled.

Height, 5 inches; width, $10\frac{1}{2}$ inches.

First Afternoon

68 Famille Verte Snuff Bottle (Chien Lung)

Flattened oviform, pure white porcelain. Beautifully pencilled figures riding horses, a lad is following bearing luggage. Painted in the enamel colors of famille rose. Underneath bears a seal mark of the period.

69 Greenish Jade Snuff Bottle (Chien Lung)

Long, quadrilateral shape. Greenish jade carving, brilliantly polished.

70 Fancy Snuff Bottle (Chien Lung)

Flattened oviform, with two mask ring handles. Pure white porcelaneous, beautifully decorated with figure and animals, and artistically pencilled in enamel colors of famille rose.

71 Agate Snuff Bottle (Chien Lung)

Graceful flattened shape. The stone is waxen yellowish, black and white. Body unornamented, and brilliantly polished.

72 White Jade Snuff Bottle (Chien Lung)

Graceful shape, pure white jade, delicately carved in high relief. Brilliantly polished.

73 Old Glass Snuff Bottle (Chien Lung)

Graceful, flattened, oviform shape. Old Peking glass, in delicate undercut are the mowtan flowers; by the side are standing rocks, on top are perched two phoenixes. In pink, blue, yellow and greenish colors.

74 Fancy Open Work Snuff Bottle

Long, oviform shape. Pure white, sonorous, porcelaneous, in delicate open work of phoenix and dragon, rising from the sea amid cloud forms and fire emblems, in pursuit of the effulgent pearl. All beautifully painted in brilliant enamel colors of coral red.

75 Fei-tsui Jade Snuff Bottle

Carved of graceful, flattened, oviform shape, fei-tsu jade, beautifully undercut; ancient designs on both sides; the grounds are filled with reddish, emerald green and cloud white.

76 White Jade Snuff Bottle

Flattened oviform. Pure white jade, beautifully carved in delicate basket shape. Of fine quality and brilliantly polished.

77 Agate Snuff Bottle

Flattened, oviform shape. The stone is waxen yellowish and black, and brilliantly polished.

78 Fei-tsui Jade Snuff Bottle

Flattened, oviform shape, in large space of emerald green, and beautifully carved are the blossoming mei trees growing among rocks. Brilliantly polished.

79 Agate Snuff Bottle

Flattened, quadrilateral shape. The stone is waxen yellowish and brown. Delicate undercut in high relief a stork standing on the rocks in the shade of a palm tree. Brilliantly polished.

80 Old Glass Snuff Bottle (Chien Lung)

Flattened, oviform shape. Peking old glass, carved, delicate undercut, curious design in green and reddish quality. Brilliantly polished.

81 Agate Snuff Bottle

Flattened, quadrilateral shape. The stone is waxen yellowish and white; delicately undercut in high relief are two horses in life-like manner.

First Afternoon

82 Golden Agate Snuff Bottle

Flattened, oviform shape. The stone is waxen, golden spotted, of fine quality and unornamented. Brilliantly polished.

83 Open Work Snuff Bottle (Chien Lung)

Flattened, long, oviform shape. Pure white, sonorous porcelain; in delicate open work are a phoenix and dragon rising from the sea amid cloud forms and fire emblems in pursuit of the sacred pearls, all of which is artistically executed in brilliant enamel color of coral red.

84 Fei-tsui Jade Snuff Bottle

Flattened, oviform shape, fei-tsui jade carved, with emerald green clouding. Brilliantly polished.

85 Old Glass Snuff Bottle (Chien Lung)

Graceful, flattened, oviform shape. Peking old glass, delicately undercut in high relief are chrysanthemum flowers and butterflies in reddish, green, blue and yellow.

86 Old Glass Small Vase (Chien Lung)

Old Peking glass; delicately undercut in high relief are season flowers and flying butterflies in the different emerald colors. Height, $2\frac{1}{2}$ inches; diameter, $2\frac{3}{4}$ inches.

87 Old Glass Writer's Water Bowl (Chien Lung)

Shape of a melon, flattened, round body, on which is carved in high relief two lizards in life-like manner. Brilliantly polished. Height, $1\frac{1}{2}$ inches; diameter, $2\frac{1}{4}$ inches.

88 Pair of Wine Cups (Chien Lung)

Slightly round, deep body and spreading mouth. Hard paste, of almost eggshell thinness. Beautifully decorated with fancy tiny designs, exquisitely pencilled in enamel colors of famille rose.

Height, 2 inches; diameter, $2\frac{1}{2}$ inches.



No. 321

89 Eight Small Dishes (Chien Lung)

Quadrilateral form. Peking enamel on copper. Beautifully pencilled in "Pu Ku" style or "Eight Antiques" in brilliant enamel colors of famille verte.

Diameter, $3\frac{3}{4}$ inches each.

90 Two Enamel Dishes (Chien Lung)

Canton enamel on copper. In square shape, with foliage at four sides. Showing mountains, ferryboats, trees, streams and buildings. In the brilliant enamel colors of famille rose.

Size, 4 inches square.

91 Pair of Enamel Wine Cups and Saucers (Chien (Lung)

Canton enamel on copper. Artistically pencilled in the "Pu Ko" styles or "Eight Antiques" in the brilliant enamel colors of famille rose.

Height of cups, $1\frac{1}{4}$ inches x $1\frac{3}{4}$ inches square.

Size of saucers, 4 inches square.

92 Ten Favorite Enamel Wine Cups (Chien Lung)

Of graceful, quadrilateral form. Peking enamel on copper. Beautifully decorated with figures and scenes depicting landscape, mountain, building, stream and trees, elaborately painted in beautiful enamel colors of famille rose.

Height, $1\frac{1}{4}$ inches; diameter, $1\frac{1}{2}$ inches.

93 Eight Enamel Spoons (Chien Lung)

Peking enamel on copper. In severe Chinese styles, of delicate floral design in various colors, exquisitely painted in enamel of famille verte.

94 Fancy Small Black Water Pot (Chien Lung)

Melon shape. Of thin, sonorous porcelain, coated with thick, brilliant enamel colors of black glaze. A graceful specimen and of fine quality.

Height, $2\frac{3}{4}$ inches; diameter, 3 inches.

First Afternoon

95 Pale Blue Ink Box (Chien Lung)

Hard, fine, porcelanous. Blue color over all the body; the underbase is also glazed.

Height, $1\frac{1}{4}$ inches; diameter, $2\frac{1}{4}$ inches.

96 Pair of Fancy Glass Bottles (Chien Lung)

Old white, reddish glass. Globular body, tapering neck and spreading mouth; carved in high relief and decorated with bold four-clawed dragons, rising from the sea amid cloud forms in pursuit of the sacred pearl.

Height, $3\frac{3}{4}$ inches; diameter, $2\frac{1}{4}$ inches.

97 Fancy Famille Rose Vase (Chien Lung)

Shape of a gourd. Hard, thin paste, green ground, and beautifully decorated with blossoms and season flowers in brilliant enamel colors of famille rose.

Height, $6\frac{1}{2}$ inches; diameter, $4\frac{1}{2}$ inches.

98 Decorated Plate (Yung Ching)

Of exceedingly fine, hard porcelain. Exquisitely decorated with a beautiful lady seated by a table and holding a fan in her right hand. Without doubt one of the finest specimens of five-color in existence. Underneath bears a seal mark.

Diameter, 8 inches.

99 Famille Rose Pen Holder (Chien Lung)

Graceful sexangular form. Of thin, sonorous porcelain and exceedingly fine quality, each panel beautifully decorated with a scene depicting a pilgrimage to a temple, and mountains, landscape, figures, trees in luxuriant foliage and a river view, all exquisitely executed in brilliant enamel colors of famille rose. Height, 4 inches; width, $3\frac{1}{4}$ inches.

100 Coral Red Writer's Water Pot (Chien Lung)

Melon shape, with wide mouth, finished with a beaded rim. Hard, white, translucent porcelain. Body coated in thick, brilliant, translucent, coral red glaze, and beautifully decorated in golden designs.

Height, $2\frac{1}{4}$ inches; diameter, $2\frac{1}{4}$ inches.

101 Wonderful Porcelain Dog (Chien Lung)

An exceptionally well modelled dog seated, with head to one side and curling tail, sharp, piercing eyes. Hard, white porcelain, covered with a very brilliant glaze of feathering deep green color, resembling the tone of cucumber skin. A very desirable and attractive specimen.

Height, $2\frac{3}{4}$ inches.

102 Pair of Famille Rose Tea Cups with Covers (Chien Lung)

Shallow body, slight foot and expanding mouth. Sonorous, thin paste; cover and body are beautifully decorated with a group of figures gathering among the bamboo fields. Glazed in enamel colors of famille rose.

Height, 3 inches; diameter, $4\frac{1}{2}$ inches.

103 Decorated Plate (Yung Ching)

Pure white, thin, sonorous paste of almost eggshell. White ground, exquisitely pencilled lotus flowers and flying swallows and butterflies in brilliant enamel colors of famille rose. Underneath bears a mark of the period.

Diameter, $7\frac{1}{2}$ inches.

104 Large Enamel Tray (Chien Lung)

Long, square shape. Peking enamel on copper. Beautifully pencilled domestic scene, depicting New Year's Day with two ladies looking at the children playing. In brilliant enamel colors of famille rose.

Length, $11\frac{1}{2}$ inches; width, $7\frac{1}{2}$ inches.

First Afternoon

105 Decorated Plate (Yung Ching)

Hard, white, sonorous paste. Beautifully decorated with blossoms and butterflies in brilliant enamel colors of famille rose. Diameter, $7\frac{1}{2}$ inches.

106 Delicate Wine Cup (Chien Lung)

Quadrilateral shape. Hard, thin paste, in richest green; ground beautifully decorated with blossoms and fancy tiny flowers in beautiful enamel colors of famille rose.

Height, 2 inches; diameter, $3\frac{1}{4}$ inches.

107 Rare Coral Red Bowl (Chien Lung)

Quadrilateral shape, with sides in four petal-shaped lobes; flanged rim of wavy four-foil form rolled at the edge. Hard, thin, sonorous, porcelanous, richest coral red ground, beautifully pencilled in the "Pu Ko" styles or "Eight Antiques" in brilliant enamel colors of famille rose, and also the poems in white at the back of the bowl; fancy floral designs in the centre ground of the interior.

Height, $3\frac{1}{2}$ inches; diameter, $6\frac{1}{2}$ inches.

108 Rare Pottery Jar (Sung)

Ovoid body, broad foot and open mouth, two loop ear on the rim. Hard, heavy clay in cream buff ground, decorated in ancient designs.

Height, $5\frac{3}{4}$ inches; diameter, $6\frac{1}{4}$ inches.

109 Large Yellow Box (Chien Lung)

Graceful shape in flattened oviform and with dome cover. Hard, white, porcelanous, coated in rich brilliant orange yellow glaze, beautifully decorated with bold five-clawed dragons. Underneath bears a special mark for the owner's name. Height, $3\frac{1}{2}$ inches; diameter, $5\frac{1}{2}$ inches.



海神圖

海神圖
此神名曰海神
居於海之東
司風雨之神也
此神之神像
乃由海神所化
故其神像之
形與海神無異
此神之神像
乃由海神所化
故其神像之
形與海神無異

110 Two Porcelain Buddhists (Ming)

Hard, sonorous, porcelanous ware. Exquisitely modelled. Figures seated on the shrine. On the bodies the gold colors are disappearing. In front are turtle and serpent ornaments. The stele are glazed in turquoise blue.

Height, $7\frac{1}{2}$ inches.

111 Pair of Famille Rose Flower Pots (Chien Lung)

Six-side forms, each of the sides beautifully pencilled with blossoms and season flowers, painted in natural colors, and glazed in richest enamel of famille rose.

Height, $4\frac{3}{4}$ inches; diameter, 6 inches.

112 Unique Vase (Sung)

Broad, pear-shaped body, high shoulders and small, straight neck. Buff stoneware, covered with white slip, which is etched away to form the decoration; a floral design of blossoming mei trees. Rare specimen of its class.

Height, $13\frac{3}{4}$ inches; diameter, $12\frac{1}{2}$ inches.

113 Fancy Open Work Pen Holder (Chien Lung)

Graceful six-side shape. Hard, thin, porcelanous, each side in delicate open work, with the centre decorated with panels of figures, animals and trees. Coated in cobalt blue, mingled with peach bloom tints.

Height, $4\frac{1}{2}$ inches; width, $5\frac{1}{4}$ inches.

114 Celadon Incense Burner (Sung)

Flattened, oviform body, low neck and wide mouth, with three low feet underbase. Gray, porcelanous ware, covered with a gray green celadon glaze of bluish tinge. In parts covered with unintentional and large crackle.

Height, 5 inches; diameter, 9 inches.

First Afternoon

115 Fancy Small Flower Pot (Chien Lung)

Graceful shape, deep, oviform body, slight base and expanding mouth. Hard, white, sonorous, porcelanous ware, the body beautifully pencilled with fancy flowers and butterflies. A delicate example.

Height, $3\frac{1}{4}$ inches; diameter, $4\frac{3}{4}$ inches.

116 Famille Rose Plate (Chien Lung)

Hard, sonorous, porcelanous. Green ground with ice crackling pattern, and beautifully pencilled with five round panels, within each of these artistically pencilled are the season flowers. Underneath bears a mark of the period.

Diameter, 10 inches.

117 Old Glass Painting (Chien Lung)

This picture shows two children playing with flowers and with pens in their hands, and dressed in very beautiful clothes. The children are depicted very naturally, showing the artist was indeed a most clever painter of children.

Height, $22\frac{1}{4}$ inches; width, $16\frac{1}{2}$ inches.

118 Old Glass Painting (Chien Lung)

This picture portrays a child with a lotus flower leaf for head-dressing, the arms and feet are bared. The painter of the picture wielded a marvellously clever brush.

Height, $22\frac{1}{4}$ inches; width, $16\frac{1}{2}$ inches.

119 Old Glass Painting (Chien Lung)

Busts of two beautiful ladies, with delicate complexions and lovely eyes. The artist has depicted both expression and thoughts truly.

Height, $22\frac{1}{4}$ inches; width, 16 inches.

120 Old Glass Painting (Chien Lung)

Infant holding lotus flowers in hands and wearing green trousers. The upper part of the body is bared. A very pleasing picture.

Height, $22\frac{1}{4}$ inches; width, $16\frac{1}{2}$ inches.

121 Old Glass Painting (Chien Lung)

Three Star Gods, Fu, Lu and Shou. Their beards are very long and ears large. The color of the robes is a very beautiful ancient hue. The technique of the artist is wonderfully good. Height, $18\frac{1}{4}$ inches; width, $14\frac{1}{4}$ inches.

122 Old Glass Painting (Chien Lung)

Lady leaning on a window sill, with beautiful complexion and lovely eyes, holding a flower between her fingers.

Height, $16\frac{3}{4}$ inches; width, $12\frac{1}{2}$ inches.

123 Old Glass Painting (Chien Lung)

A Royal Prince seated on a sofa and accompanied by two maid-servants, the faces of which are very attractive and well painted. Height, $18\frac{1}{4}$ inches; width, $14\frac{1}{2}$ inches.

124 Old Glass Painting (Chien Lung)

Beautiful lady dressing her hair. The scene suggests a lady's dainty and fragrant boudoir.

Height, $22\frac{1}{2}$ inches; width, $16\frac{3}{4}$ inches.

125 Old Glass Painting (Chien Lung)

Beautiful lady with a smiling face is leaning on a window sill and gathering the blossoming flowers. The workmanship is extremely fine.

Height, $16\frac{3}{4}$ inches; width, $12\frac{1}{2}$ inches.

First Afternoon

126 Delicate Artificial Flowers (Chien Lung)

By means of various kinds of old jades making artificial flowers, sprays, the season flowers and spreading or overhanging branches; silver branch in the centre, on which a group of birds are perched; all of which are embellished in natural colors. The flowers are enclosed in an agate beaker-shaped vase in imitation of an ancient bronze vessel. Height, 29 inches.

127 Sang de Boeuf Water Pot (Yung Ching)

Graceful melon shape. Hard, white, porcelanous, coated with thick Sang de Boeuf glaze.

Height, $4\frac{1}{4}$ inches; diameter, $4\frac{1}{2}$ inches.

128 Perfume Box (Chien Lung)

Hard, white, porcelanous; ovoid form, with original cover; cover and body beautifully decorated with tiny fancy flowers and figures. All in enamel colors of famille rose.

Height, $2\frac{1}{4}$ inches; diameter, $3\frac{3}{4}$ inches.

129 Large Famille Rose Bowl (Chien Lung)

Graceful shape, with wide mouth. Sonorous, thin paste in brilliant powder blue ground, beautifully decorated with chrysanthemum flowers and spreading branches. All in brilliant enamel colors of famille rose. Underneath bears a mark of the period.

Height, 4 inches; diameter, $8\frac{1}{4}$ inches.

130 Pair of Small Tea Cups with Covers (Chien Lung)

Deep body, wide mouth and small base, with dome cover; cover and body have a green ground with ice crackling patterns and panelled with small, round panels; each of these panels is decorated with figures of different types. All in brilliant enamel colors of famille rose. Underneath bears a mark of the period.

Height, 3 inches; diameter, $3\frac{3}{4}$ inches.

131 Exceptional Tall Bronze Figure of Kuan-Yin (Sung)

Very heavy, blackish bronze. This unusually large and important statue of the Goddess of Mercy stands on a lotus flower base and is boldly modelled. The face is particularly pleasing, and her hair is carefully lined and nearly hidden under a cowl-like head-dress; a pearl necklace is on the breast, and a rosary is in her left hand. This figure is one of the rarest in this collection.

Height, $12\frac{1}{2}$ inches.

132 Exceptional Tea Cup (Chien Lung)

Deep body, broad foot and open mouth. Of thin, hard paste, artistically painted with three kinds of fruit, and exquisitely pencilled in rich and brilliant enamel colors of famille rose. Bears a special seal mark.

Height, $2\frac{1}{2}$ inches; diameter, $3\frac{3}{4}$ inches.

133 Decorated Bottle (Chien Lung)

Globular body, short neck and broad foot. Richest green ground in ice crackling design, beautifully embellished with sprays of peonies and chrysanthemum flowers painted in natural colors. Underneath bears a seal mark.

Height, $6\frac{1}{4}$ inches; diameter, $3\frac{3}{4}$ inches.

134 Peacock Green Jar (Yung Ching)

Graceful, ovoid form. Hard, white percelain; all coated with a thick, brilliant, peacock green glaze and minutely crackled in irregular forms.

Height, $8\frac{1}{2}$ inches; diameter, $7\frac{3}{4}$ inches.

135 Fancy Pale Yellow Bowl (Yung Ching)

Graceful shape, in shallow body and expanding mouth. Hard, sonorous, white porcelain, covered in the interior and exterior with a brilliant even toned glaze of pale yellow color in the high lights.

Height, $2\frac{3}{4}$ inches; diameter, $7\frac{1}{4}$ inches.

First Afternoon

136 Fancy Flat Bottle (Chien Lung)

Ovoid, flattened body, pea green ground, decorated in rich blue and peach bloom under glaze of peach tree and citron plants. A graceful form. Underneath bears a seal of its reign. Height, $10\frac{1}{2}$ inches; diameter, $7\frac{3}{4}$ inches.

137 Rare Ruby Vase (Chien Lung)

High oviform body, broad foot, high neck and expanding mouth. Hard, heavy paste, the whole body coated in brilliant ruby color of famille rose, and green color glazed in interior of neck.

Height, $9\frac{1}{4}$ inches; diameter, $4\frac{1}{2}$ inches.

138 Fancy Small Jar (Chien Lung)

Hard, white ground on cobalt blue, designs all over the body in tiny fancy styles; delicate borders on the rim and foot. Underbase bears six characters.

Height, $4\frac{1}{2}$ inches; diameter, $4\frac{1}{2}$ inches.

139 Bronze Buddha (Sung)

Figure of Wen Chang, God of Education and Study of the Arts, seated on a wooden shrine, with a stern countenance, one hand against his girdle and the other resting on his knee; head has a mandarin hat, and the robes are beautifully decorated with many bold five-clawed dragons and flying storks amid cloud forms and fire emblems. The golden gilt is entirely disintegrated.

Height, $13\frac{3}{4}$ inches.

140 Peacock Green Bottle (Chien Lung)

Oviform body, slight long neck, with expanding mouth. Hard, white, translucent porcelain. Whole body coated with a thick, brilliant, peacock green glaze and minutely crackled in irregular forms.

Height, $10\frac{3}{4}$ inches; diameter, $7\frac{1}{2}$ inches.

141 Ancient and Important Jar (Han)

Hard, reddish stoneware and slightly baked. Flattened, oviform body, with curious decoration on the rim, surmounted by four erect rings, the lower part covered with lotus leaves, and a conventional band on the body, with no trace of glaze. Height, 5 inches; diameter, 9 inches.

142 Fancy Small Fish-kong (Kang Hsi)

Round, deep body, broad foot and spreading mouth, of graceful outline and finished technique. It is of fine quality hard paste, and coated with a pure white glaze. Beautifully drawn and painted in underglaze blue of brilliant quality, with chrysanthemum flowers and arabesque leaves; upper and bottom have conventional pattern borders. Height, 5 inches; diameter, $4\frac{3}{4}$ inches.

143 Large Decorated Plate (Yung Ching)

Graceful form. Hard, sonorous porcelain, pea green ground, beautifully decorated in brilliant enamel colors of famille rose. The embellishment consists of blossoming chrysanthemum flowers with a rich plumaged bird perched thereon. Diameter, 14 inches.

144 Exceptional Decorated Bottle (Yung Ching)

Full globular body of shapley form, gracefully tapering neck, with expanding mouth. Hard, heavy, sonorous porcelain. Beautifully decorated in bright pea green, blackish white, and with peach bloom tints on light blue ground, artistically painted mandarin ducks swimming among lotus flower fields; at shoulder band of archaic pattern, and long, painted banana leaves above. A rare specimen of its class. Height, $12\frac{1}{2}$ inches; diameter, $7\frac{3}{4}$ inches.

145 Sang de Boeuf Jardiniere (Chien Lung)

Graceful form. Hard, sonorous paste, body covered in rich and brilliant Sang de Boeuf glaze.

Diameter, $7\frac{1}{2}$ inches.

First Afternoon

146 Coral Red Small Fish-kong (Chien Lung)

Deep, round body and open mouth. Sonorous, thin paste; whole body covered in rich and brilliant coral red glaze.

Height, 7 inches; diameter, $8\frac{3}{4}$ inches.

147 Club-Shaped Tall Vase (Kang Hsi)

Beaker-shaped. Dense, sonorous porcelain, with scenes depicting eight fairies within the panels, exquisitely executed in shades of underglaze cobalt blue on a brilliant white ground. Height, 17 inches; diameter, $8\frac{1}{4}$ inches.

148 Extraordinary Flambé Vase (Yung Ching)

In graceful flower basket shape; flattened, globular body, wide foot, tapering neck, and spreading mouth. Heavy vibrant porcelain, thick glaze of various reds, which are copiously splashed with rich brown, gray and a feathery blue; the glazes are carried in interior of neck and under the foot. The form and quality in imitation of the Chuan Yao ware. Height, 11 inches; diameter, $9\frac{1}{4}$ inches.

149 Pair of Yellowish Flower Pots (Chien Lung)

Quadrilateral shape. Hard, sonorous, porcelainous. The body coated with thick, brilliant, yellowish glaze of an even color. Very rare in pairs.

Height, 5 inches; width, 6 inches.

150 Fancy Flower Pot (Chien Lung)

Flattened, round body with spreading mouth. Of hard, sonorous porcelain, and beautifully decorated with kylins, dragons and flowers, all in enamel colors of famille rose.

Height, 5 inches; diameter, $7\frac{1}{4}$ inches.



No. 428

151 Pair of Porcelain Figures (Chien Lung)

Hard, white paste. The figures are seated on a rectangular black pedestal; the heads are particularly well modelled and full of character. The Greco treatment of the eyebrows, moustache and beard is very dignified. Hands holding a tray over head. Robes are simple and glazed in enamel colors of famille rose. Height, $8\frac{3}{4}$ inches.

152 Blue and White Flower Jar (Chien Lung)

Deep, high body, long neck, graceful handle, short spout and dome cover. Hard, heavy, sonorous, porcelanous; beautifully decorated with chrysanthemum flowers and arabesque leaves on cobalt blue.

Height, $14\frac{1}{2}$ inches; diameter, $7\frac{1}{2}$ inches.

153 Bronze Vase (Sung)

Bronze sacrificial vase, of quadrilateral, bulbous shape, square base and neck, with two ring and mask handles. The handles in the shape of dragons' heads, are beautifully cast. Body boldly unornamented, and the patina is of bronze gilt, with dark green and crimson corrosion.

Height, $14\frac{3}{4}$ inches; diameter, $7\frac{3}{4}$ inches.

154 Tall Vase (Kang Hsi)

Beaker shape, rich pea green ground. Beautifully painted blossoms, chrysanthemums, rocks and flying birds, in two shades of underglaze blue and white, and brilliant peach bloom tints. Height, $17\frac{1}{4}$ inches; diameter, $8\frac{1}{2}$ inches.

155 Iron Rust Vase (Yung Ching)

Quadrilateral shape. Hard porcelain, coated with an attractive variety of iron rust glaze, with a sub-base of olive brown; the surface is flecked with deeper tones of iron rust of unusual grain. The brilliant surface shows an iridescence. Under-base is glazed in olive brown.

Height, 10 inches; width, 6 inches.

First Afternoon

156 Sang de Boeuf Bowl (Ming)

Deep body, broad foot, and open mouth. Hard, white porcelain. Exterior and interior are covered with a brilliant Sang de Boeuf glaze. Rim is an even white, under-base is celadon green glaze and crackled.

Height, 3 inches; diameter, $7\frac{3}{4}$ inches.

157 Unique Pair of Pottery Parrots (Ming)

Hard, heavy pottery. The birds stand on rocks, the whole body coated in rich and brilliant turquoise blue glaze; head erect and bill straight. Exquisitely modelled.

Height, $7\frac{1}{2}$ inches.

158 Old Ivory Table Screen (Chien Lung)

Best quality of old ivory, exquisitely carved in high relief, with scenes depicting a domestic garden, an old man seated, and accompanied by a lad, with musical instruments. On the back of the screen are marked Imperial poems.

Height, $7\frac{3}{4}$ inches; width, $4\frac{1}{4}$ inches.

159 Ancient Vase (Sung)

Hard, grayish stoneware, reddened in the fire and covered with smooth creamy white glaze and finely crackled; the neck beautifully decorated with tiny figures, dragons, clouds and animals. Rare and important work of its class.

Height, $18\frac{1}{4}$ inches.

160 Extraordinary Vase (Sung)

Of very ancient shape. Hard, gray white stoneware, burnt rusty, in warm creamy white glaze and minutely crackled. The neck beautifully decorated with tiny figures, animals and other objects. Rare, and worthy of the attentions of museums and collectors.

Height, $18\frac{3}{4}$ inches.

161 Remarkable Pottery Group (Ming)

Hard, heavy buff clay, slightly baked, and covered with brilliant enamel colors of turquoise blue and yellow glaze. It represents a galloping horse, richly caparisoned, ridden by a man with whip in hand. An interesting example.

Height, $13\frac{3}{4}$ inches.

162 Unique Vase (Ming)

Hard, heavy, porcelanous. Low, swelling oval body and long neck; the base strongly modelled, with tubular handles to neck. Coated in thick, brilliant creamy white, and beautifully panelled with figures, birds and trees. Pencilled in brown yellowish colors. A fine and unique example. Height, $13\frac{1}{4}$ inches; diameter, $7\frac{1}{2}$ inches.

163 Pair of Pottery Fu Dogs (Ming)

Hard, heavy pottery, covered with rich brilliant glaze of dark golden. The mythical lions are called Dogs of Fu, being the guardians of Buddhist temples and images. The animals are seated on an unusual design of conventional cloud form, one has a moveable ball under paw, and the other with a cub Fu. A fine example and vigorously modelled.

Height, each, $8\frac{1}{2}$ inches.

164 Unique Vase (Sung)

Slender, with small neck and four handles. Hard, heavy gray buff stoneware, covered with thick brilliant warm creamy transparent glaze and minutely crackled.

Height, 12 inches; diameter, $9\frac{1}{2}$ inches.

165 Rare and Important Pottery Crab (Ming)

Fine white clay, covered with thin yellow glaze, slightly fired, and cleverly modelled; a crab rising from the terrible waving sea. Coated in brilliant enamel color of dark aubergine and turquoise blue. Height, 12 inches.

SECOND DAY'S SALE
THURSDAY, FEBRUARY, 1st, 1917
At 2.30 o'clock P. M.

166 Pair of Kylin Incense Holders (Ming)

The animals are seated on their haunches and rest on square tables with open, cusped sides. Modelled with open mouth and the characteristic glaring expression, prominent teeth, scroll-like form of hair, long mane, etc., which are to be seen in varying shapes in every temple and public building in China. One with a cub Fu climbing up over lap, and other, with one paw on the ball post, the movable ball which slides under the post is missing. On their back a taper holder topped by lotus flowers. Covered with a brilliant transmutation glaze, showing splashings and featherings of three colors; aubergine, turquoise blue and yellow. Height, $7\frac{1}{2}$ inches.

167 Rare Pottery Jar (Ming)

High, oviform body, with foliage pattern on the whole body, and glazed in creamy white, minutely crackled.

Height, $11\frac{1}{2}$ inches; diameter, $8\frac{1}{2}$ inches.

168 Fancy Porcelain Figure (Ming)

Hard, sonorous, porcelanous. Cleverly modelled standing figure, holding a flower basket, artistically painted in the brilliant enamel colors of the Ming, five glazes.

Height, $10\frac{1}{2}$ inches.



No. 445

169 Unique Stone Lion (Ming)

Standing lion in stone slate with open mouth, prominent teeth, scroll-like form of hair, long mane, etc. One of the fantastic animals which can be seen in various shapes in every temple and public building in China. The slate painting is reddish, and the animal in blackish brown.

Height, $5\frac{3}{4}$ inches.

170 Kao Yao Jar (Ming)

Hard, heavy, porcelanous, coated in thick, brilliant, worm, creamy white glaze minutely crackled, and body with flanged rim in numerous foil forms. Under foot bears four characters of the period.

Height, $9\frac{1}{2}$ inches; diameter, $8\frac{3}{4}$ inches.

171 Exceptional Jar (Han)

Hard, grayish white stoneware, fired dark reddish brown. Graceful, oviform body, curious decoration, with conventional bands on the body and neck, the bottom ornamented with lotus leaves, the glaze entirely disintegrated.

Height, $10\frac{1}{2}$ inches; diameter, 10 inches.

172 Fukien Figure Representing Kwan-Fucianism (Ming)

Fukien heavy porcelain, with exceptionally brilliant and even thick glaze of pure white. The figure represents Kwan-Fucianism, seated on a shrine, with hands under robe. The boldly modelled face has small gashes to insert the flowing beard.

Height, $9\frac{1}{2}$ inches.

173 Large Kao Yao Vase (Ming)

Globular body, broad foot, short neck and open mouth, with two mask rings on the rim. Heavy, dense porcelain, the whole body coated in deep sky blue glaze, and with faint crackles. Height, 15 inches; diameter, $8\frac{1}{2}$ inches.

Second Afternoon

174 Pea Green Vase (Chien Lung)

Full globular body, bottle-shaped, with slight neck. Hard, white porcelain, the whole body covered with thick pea green glaze. Beautifully decorated with willow trees and blossoming mei trees, the roots of which are growing among rocks; overhead are flying swallows. Artistically executed in brilliant enamel colors of blue and white.

Height, 17 inches; diameter, $9\frac{1}{2}$ inches.

175 Remarkable and Important Pottery Jar (Tang)

Simple ovoid form. Hard, gray buff stoneware, covered with thick, transparent bluish glaze. Decorated with four panels, containing birds, animals and flowers, these being divided with bands of a bold trellis design. Excavated within the last few years; the glaze in places has disappeared.

Height, $10\frac{3}{4}$ inches; diameter, $12\frac{1}{4}$ inches.

176 Unique Jar (Sung)

Graceful, ovoid body and small mouth. Hard, grayish buff stoneware, with warm, creamy white glaze minutely crackled, and body with flanged rim in numerous foil forms.

Height, 9 inches; diameter, $9\frac{3}{4}$ inches.

177 Fukien Figure of Kuan-Yin (Ming)

Fukien porcelain, covered with brilliant, thick, pure white glaze of uniform quality. The Goddess of Mercy is half-seated on the rocks, one hand under the flowing robes and the other resting on her knee. The hair is dressed high on her head and covered with a cowl. At the left side is her favorite attendant holding the sacred books. Exquisitely modelled, the robes being skilfully draped, exposing the broad chest of the deity.

Height, $9\frac{1}{2}$ inches.

178 Remarkable Pottery Dog Fu (Ming)

Hard, heavy gray clay, slightly baked. Cleverly modelled Dog Fu, a form of fantastic animal which is to be seen in various shapes in every temple and public building in China. The animal is seated, with open mouth, prominent teeth, scroll-like form of hair, long mane, etc. Covered with a brilliant transmutation glaze showing splashings and feathering of sundry grays and blues over rich reds and yellows. An exceptional and well-balanced piece.

Height, 11½ inches.

179 Blue and White Vase (Kang Hsi)

Beaker shape; sonorous, hard paste of exceedingly fine quality. Decorated with mountain scenes and children playing under the shade of trees. Elaborately painted in underglaze cobalt blue of very brilliant quality.

Height, 11½ inches; diameter, 5½ inches.

180 Large Lung Chuan Yao or Celadon Plate (Ming)

Graceful shape. Hard, heavy porcelain, coated all over the body with a brilliant, even toned pure celadon glaze of delicate light pea green tint, and beautifully decorated with floral forms.

Diameter, 12½ inches.

181 Bronze Figure of Buddhist (Ming)

Seated on a lotus base, cross-legged, with soles of feet upward and hands resting on knees. Head with characteristic modular hair and long-lobed ears, the sacred boss on forehead; upper part of the body and arms are bare. Robes are skilfully draped, exposing the broad chest of the deity.

Height, 8½ inches.

182 Light Blue Bottle-Shape Vase (Yung Ching)

Globular body, with sloping shoulder and full neck, slightly expanding mouth. Hard, white porcelain, covered with a brilliant glaze of light blue, and base shows the unglazed paste.

Height, 14 inches.

Second Afternoon

183 Fancy Soft Paste Small Bottle (Chien Lung)

Round body, long neck, spreading mouth and broad foot. Soft crackle, textured porcelain, showing deep blue chrysanthemum flowers and arabesque leaf decoration, under the pellucid glaze. Height, $6\frac{3}{4}$ inches; diameter, $3\frac{1}{2}$ inches.

184 Sang de Boeuf Bottle (Chien Lung)

Full globular body, wide, long neck. Hard, white porcelain, the whole body covered with a clear, brilliant Sang de Boeuf glaze and flambé variation of delicate pearly gray tint, finely crackled with light amber lines. The base unglazed.

Height, 14 inches; diameter, $8\frac{3}{4}$ inches,

185 Fancy White Porcelain Vase (Kang Hsi)

An unusual shape. Of dense, hard paste, beautifully decorated with blossoms, chrysanthemums and arabesque leaves. Coated in a single color of pure white glaze.

Height, $5\frac{1}{2}$ inches; diameter, $3\frac{1}{4}$ inches.

186 Yellowish Small Jar (Chien Lung)

Hard, white porcelain. Watermelon shape, molded in eight shaped lobes and short neck; coated in thick, brilliant, yellowish glaze and minutely crackled.

Height, $3\frac{3}{4}$ inches; diameter, 4 inches.

187 Famille Rose Bowl (Chien Lung)

Slight deep body, broad foot and expanding mouth. Sonorous, thin porcelain, in thick, brilliant coffee red ground. Various shaped panels painted with blossoming season flowers. All in brilliant enamel colors of famille verte. Underneath bears a mark of the period.

Height, $3\frac{1}{2}$ inches; diameter, $7\frac{1}{2}$ inches.



No. 490

188 Statuette of Lohan (Ming)

Hard, gray white, porcelanous ware, burnt rusty brown and covered with a beautiful gray green celadon glaze of faint bluish tone. The figure of Lohan is half-seated against a bag, with one leg doubled under the other. The left hand holds the sacred book, and the other is resting on the bag. Has long-lobed ears, and the head is delicately pencilled in gold; a rosary on breast; breast, hands and feet were left unglazed. Robes are skillfully draped, exposing the broad chest of the deity.

Height, $6\frac{1}{4}$ inches.

189 Fukien Porcelain Tall Vase (Chien Lung)

Graceful shape; ovoid, long body, broad base and spread-mouth. Coated in a rich and brilliant pure white glaze.

Height, 12 inches; diameter, 6 inches.

190 Blue and White Jar (Kang Hsi)

Sonorous, white, hard paste, artistically decorated with five beautiful ladies and one boy; one of the ladies holds a scale and another holds a fan; standing under the shade of bamboos, the roots of which are growing among rocks. Artistically executed in brilliant enamel colors and under-glaze cobalt blue.

Height, $8\frac{1}{4}$ inches; diameter, 8 inches.

191 Fukien Porcelain Kuan-Yin and Child (Ming)

Fukien translucent porcelain, covered with a brilliant cream white glaze of even quality. Complete with figures and accessories. Representing Kuan-Yin, the maternal, to whom childless women pray. Seated on a rocky pedestal, with an infant on her lap; the infant bears the lotus sceptre, and at her side are the vase of nectar and a bundle of sacred books. At her feet two small figures, representing her flower, Jung Nee (the dragon maid), holding a pear, and her comrade, Chen Tsai. At base of pedestal, and above the crest of waves, are two dragons twining round the rock.

Height, $14\frac{1}{2}$ inches.

Second Afternoon

192 Rare and Unique Jar (Yuen)

Graceful oviform, short neck and expanding mouth. Hard, gray buff stoneware, covered with a thick, brilliant, warm creamy white glaze, and minutely crackled in irregular forms. The base left glazed.

Height, 9 inches; diameter, $8\frac{1}{4}$ inches.

193 Blue and White Vase (Yung Ching)

Ovoid, long body. Pure white ground in cobalt blue design, with phoenix flying amid the clouds.

Height, 9 inches; diameter, $3\frac{1}{2}$ inches.

194 Large Lung Chuan Plate (Ming)

With narrow, flat rim with foil edge, beautifully decorated with a band of flowering branches, covered with a thick, brilliant bluish green celadon glaze.

Diameter, $13\frac{3}{4}$ inches.

195 Statuette of Wen Chang (Ming)

Hard, heavy stoneware. God of Education and Study of Arts. Seated on a shrine; his hands are against his girdle, and on his head a crown; the stern face and the hands are gilded in golden colors. Beautifully coated in enamel colors of turquoise blue, dark aubergine and yellowish glaze. An exquisitely modelled piece. Height, $9\frac{3}{4}$ inches.

196 Rare Vase (Ming)

Baluster-shaped, with small neck. Buff stoneware, beautifully decorated with white slip flowers and a thin, transparent glaze. A leaf design is formed at base.

Height, $10\frac{1}{4}$ inches; diameter, $6\frac{1}{4}$ inches.

197 Exceptional Pair of Pottery Eagles (Ming)

Hard, heavy pottery, covered with a rich glaze of blackish brown white. The birds are standing on rocks, with spreading wings. Exquisitely modelled, and rarely to be obtained in pairs. Height, $7\frac{3}{4}$ inches each.

198 Unique Pottery Animal (Ming)

Light buff clay, slightly baked. The strongly modelled animal, called the unicorn, is seated on a bent block pedestal, with head erect and tail upturned. Coated with a thick, brilliant turquoise blue glaze.

Height, $9\frac{1}{4}$ inches.

199 Remarkable Pottery Incense Burner (Ming)

Quadrilateral form, slightly flattened body, low neck, with two expanding long handles on both sides and four low feet. In a brilliant emerald green, mottled, with foliated medallions of peony, chrysanthemum and camelia modelled in high relief. This incense burner, being a pottery ware, is rare and invaluable. Has carved teakwood cover and stand. Height, $6\frac{1}{2}$ inches; width, $9\frac{1}{2}$ inches.

[See Illustration]

200 Blue and White Bottle (Ming)

Hard, white, porcelanous. Ovoid body, bulbous mouth and broad foot. Decoration in cobalt blue of chrysanthemums and arabesque leaves. Underbase bears six characters of the period. Height, $10\frac{3}{4}$ inches; diameter, $5\frac{1}{4}$ inches.

201 Decorated Plate (Kang Hsi)

Hard, sonorous paste, beautifully painted in various reserves, in which are blossoms of the season flowers, the whole enamelled in rich and brilliant five colors.

Diameter, 11 inches.

202 Pair of Small Bottles (Chien Lung)

Low and spreading mouths. Rich pink ground, beautifully decorated with flowers in rich famille rose glaze. Fine quality. Height, $6\frac{1}{4}$ inches; diameter, 3 inches.

Second Afternoon

203 Rare Bronze Buddha (Ming)

Standing figure representing the King Serpent. Stern expression, head has covering, hands are holding a peach, a jewel necklace on breast; around part of the body a spotted serpent curls. Height, $6\frac{1}{2}$ inches.

204 Large Glass Vase (Chien Lung)

Graceful shape. Old yellow and coral red glass. Boldly carved in high relief. The embellishment consists of various ornaments known as the Pu Ko styles or Eight Antiques. A rare specimen.

Height, $8\frac{3}{4}$ inches; diameter, $2\frac{3}{4}$ inches.

205 Soft Stone Kuan-Yin (Chien Lung)

Remarkable soft stone in natural rich yellowish color. The Goddess of Charity or Mercy is seated on open rock work with an infant on her lap; the infant bears the sacred box. The flowing robes are boldly and skillfully undercut. Height, $8\frac{1}{4}$ inches.

206 Pair of Blue and White Small Beakers (Kang Hsi)

Dense, sonorous, hard, porcelanous. Decorated in brilliant underglaze blue. Unique specimen of the period.

Height, 7 inches; diameter, $4\frac{1}{2}$ inches.

207 Bronze Vase (Sung)

Beaker-shaped, with cylindrical body, spreading neck ornamented with vertical ribs. Body boldly decorated with Chou ornaments. The patina is bronze gilt, with green and crimson corrosion.

Height, $8\frac{1}{4}$ inches; diameter, $4\frac{1}{2}$ inches.

208 Rare and Important Bronze Buddha (Ming)

Figure is seated on a lotus base, cross-legged, with soles of feet upwards, and hands in centre with palms and fingers up. Head has two masks on both sides, and covered with a crown; decorated with a tiny bust of a Buddha. The figure has three hands on each side, each holding various kinds of sacred instruments. Upper part of the body and arms are bare; the jewel necklace on the breast has sacred emblems. At the feet are two figures of young attendants. There are seven pigs curiously decorated on the lotus base. A rare and unique example; the whole body gilded.

Height, with base, 14 inches; width, $8\frac{1}{2}$ inches.

209 Bronze Beaker (Ming)

Graceful beaker shape in miniature, tubular body, with expanding mouth; a lizard is coiled round body, in pursuit of the sacred pearl, and fire emblems. Underneath bears a mark of the period.

Height, $10\frac{1}{4}$ inches; diameter, $6\frac{1}{4}$ inches.

210 Bronze Vase (Ming)

An unusual shape. Body boldly decorated with Chou bronze vessel ornaments. Really a graceful shape.

Height, $8\frac{1}{2}$ inches.

211 Bronze Vase (Ming)

Low, swelling, oval body, broad neck, slightly tapering to beaded rim. Body unornamented.

Height, 9 inches; diameter, $4\frac{3}{4}$ inches.

212 Rare Bronze Vase (Han)

Beaker-shaped, body decorated with Chou ornaments. The patina is bronze gilt, with dark green and crimson corrosion.

Height, 12 inches.

Second Afternoon

213 Bronze Jar (Han)

Pear-shaped body; high, broad shoulders, short, contracted neck and wide mouth, with two mask rings on the rim. Body unornamented; the surface is covered with a beautiful green patina. Height, $6\frac{1}{4}$ inches; diameter, 9 inches.

214 Bronze Buddha (Ming)

The deity is seated on a lotus flower base in a contemplative attitude, with soles of feet upwards, the left hand holding the sacred pearl, the other uplifted. Head has crown, and an elaborate necklace of pearls with sacred emblems and the swastika in centre; over the whole body gold colors. The flowing robes are boldly and skillfully modelled. Height, 10 inches.

215 Bronze Vase (Sung)

Graceful shape, of rectangular form, and two animal head handles; body beautifully ornamented with Chou bronze design. Height, $11\frac{1}{2}$ inches; width, $6\frac{1}{2}$ inches.

216 Bronze Bell (Han)

Ancient and unique shape, used in time of battle; it hangs on a tree, and is sounded by the winds, making a noise and frightening away enemies. It was first used and invented in the Han Dynasty. Height, $13\frac{1}{2}$ inches.

217 Bronze Buddha (Ming)

Figure represents the Serpent King, who takes care of the world's serpents. He is seated on a wooden shrine, with stern countenance and hands resting on knees. The robes are boldly decorated with numerous five-clawed dragons rising from amid cloud forms and fire emblems. The whole body has traces of golden coloring.

Height, 14 inches.

218 Rare Bronze Quadrilateral Vase (Han)

Body boldly unornamented, with two mask rings on both sides. An ancient and curious form.

Height, $13\frac{1}{4}$ inches.

219 Bronze Basin (Han)

Deep body, wide mouth and gently curving sides, with high expanding base, and two masks on body; body boldly unornamented.

Height, $5\frac{1}{4}$ inches; diameter, $10\frac{1}{4}$ inches.

220 Extraordinary Bronze Buddha (Ming)

Buddha, with stern countenance, is seated, cross-legged, with soles of feet upwards, in an attitude of meditation. He wears a royal crown, beautifully ornamented with numerous tiny figures. Exquisitely modelled. The whole body in gold gilt, a lost art.

Height, 19 inches.

221 Rare and Important Bronze Vase (Han)

Gourd shape; flattened, oviform body, high, tapering neck, expanding base and open mouth, with two mask ring handles on the rim; the whole body unornamented. Inscription of letters on the bottom. Covered all over with dark green and crimson corrosion.

Height, 12 inches; diameter, $8\frac{1}{4}$ inches.

222 Bronze Jardiniere (Han)

Shallow body, wide mouth, with two loose rings on the rim, beautifully decorated with numerous spottings around the whole body, and covered with dark green and crimson corrosion.

Height, $3\frac{1}{2}$ inches; width, $8\frac{1}{2}$ inches.

Second Afternoon

223 Unique Thibet Bronze Buddha (Yuen)

A strongly molded Buddha with fierce expression is riding a mule, the left hand outstretched and the right hand holding a dead man's heart. Surrounding the body and base are men's heads with humorous expressions. The mule's collar has Thibetan bells; in gold coloring.

Height, $6\frac{3}{4}$ inches; width, 6 inches.

224 Exceptional Bronze Buddha (Ming)

Standing figure, naked body, curious countenance, open mouth, and showing tiny teeth; the right hand holds an axe, fierce, staring black eyes and hair, mysteriously decorated with three heads, and a cow's head on the back. The whole body in brilliant gold coloring.

Height, $7\frac{1}{2}$ inches.

225 Remarkable Artificial Jade Flowers (Chien Lung)

Varying kinds of old jades forming artificial flowers. High class of workmanship, showing effective sprays of mei trees and chrysanthemum flowers, the embellishment consisting of spreading branches and birds; silver trunk in the centre; the flowers, leaves and pedestals are in natural colors. Enclosed in a cloisonne beaker-shaped vase.

Height, 30 inches.

226 Pair of Flower Pots (Chien Lung)

Quadrilateral shape, deep body. Hard, sonorous, porcelainous, beautifully decorated with blossoms of Thousand Flowers and butterflies flying among them. Exquisitely pencilled in brilliant enamel colors of famille verte.

Height, 5 inches; diameter, $6\frac{1}{4}$ inches.



No. 543

227 Three Star Gods (Chien Lung)

Of sonorous, hard, white porcelain, the Three Star Gods, Fu, Lu and Shou, each with smiling face and open mouth; the Fu God carries an infant on his lap, the others carry peaches and ju-i; standing on an original open work porcelain base. Exquisitely executed in brilliant enamel colors of famille rose. A group of fine and vigorously modelled figures. Height, each, with base, $12\frac{1}{2}$ inches.

228 Rare Flambé Bottle (Chien Lung)

Flattened, globular body, broad foot and slightly tapering neck. Heavy, dense porcelain, enveloped in a luminous glaze of soft sealing wax red of deep tone, flecked and splashed with delicate bluish and greenish grays. Under the foot the seal of Chien Lung incised beneath the glaze.

Height, $8\frac{1}{2}$ inches; diameter, $5\frac{3}{4}$ inches.

229 Rare Soft Paste Bottle (Chien Lung)

Globular body, broad foot and tapering neck. Light, sonorous, porcelanous, coated in brilliant white glaze and with café au lait crackles. The glaze is carried in interior and underbase.

Height, 9 inches; diameter, 5 inches.

230 Wine Cup (Chien Lung)

Quadrilateral shape. Of sonorous, thin porcelain; on each of the panels is pencilled the Imperial poems in ink glaze, with coral red and gold.

Height, $2\frac{1}{2}$ inches; width, $4\frac{1}{2}$ inches.

231 Lung Chuan Yao Flower Stand (Chien Lung)

A very interesting and rare shape of a plant leaf, with tiny fairy plant leaves surrounding the body. Beautifully glazed in turquoise blue coloring. Height, $7\frac{1}{2}$ inches.

Second Afternoon

232 Fancy Pen Holder (Yung Ching)

Graceful form, bamboo root shape, pea green color over the body, with lizards clinging to the mouth. A rare specimen. Height, $4\frac{1}{2}$ inches; width, $4\frac{1}{2}$ inches.

233 Small Temple Jar (Chien Lung)

Greenish yellow ground; decoration of fancy tiny flowers with dome cover. All in richest brilliant famille rose glaze. Height, $5\frac{3}{4}$ inches; diameter, $5\frac{1}{2}$ inches.

234 Tall Fukien Porcelain Vase (Ming)

Beaker-shaped. Body glazed in rich cream white color. Height, $14\frac{3}{4}$ inches; diameter, $6\frac{1}{4}$ inches.

235 Peacock Green Vase (Chien Lung)

Oviform, bottle-shaped, with slightly expanding mouth. Hard, white porcelain, covered with brilliant peacock green glaze of even color and purity, minutely crackled. Height, 12 inches; diameter, $7\frac{1}{2}$ inches.

236 Pair of Coral Red Tea Cups (Chien Lung)

Hard, white, porcelanous. Exterior of the cup and cover are coated with coral red, and beautifully undercut in fancy tiny designs. Interior glazed in powder green color. Very rare pair. Height, $3\frac{1}{2}$ inches.

237 Pair of Ruby Tea Cups with Covers (Chien Lung)

Graceful shape. Thin, sonorous paste, the exterior and covers are coated with a brilliant ruby glaze. Underneath bears a mark of the period. Height, 3 inches; diameter, $4\frac{1}{2}$ inches.

238 Four Famille Rose Tea Cups with Saucers (Chien Lung)

Deep body, slight base and wide mouth. Thin, sonorous, porcelanous. Body and covers glazed in different colors and beautifully painted with floral designs. Underneath bears a mark of the period.

Height, $3\frac{1}{2}$ inches; diameter, $4\frac{1}{4}$ inches.

239 Pair of Eggshell Tea Cups with Covers (Chien Lung)

Slight foot, expanding mouth, and with dome cover. Sonorous, thin, porcelanous, with transparent eggshell spottings. The exterior and interior are beautifully painted with citron plants, in brilliant enamel colors of famille rose.

Height, 3 inches; diameter, $4\frac{1}{2}$ inches.

240 Open Work Famille Rose Vase (Chien Lung)

Fine hard paste. In the form of six sides; on each side are skillfully carved in transparent working a delicate swastika lattice and keyfret pattern. Glazed in a brilliant famille rose. Around the shoulder, base and foot are similarly modelled and glazed. It would be vandalism to underrate its value. Has carved teakwood stand.

Height, 12 inches; width, 5 inches.

[See Illustration]

241 Pea Green Jar (Chien Lung)

Graceful form. Hard, sonorous, porcelanous; body finely coated with thick, brilliant pea green color, and beautifully decorated with flying bats and cloud forms and fire emblems; the glaze carried under base.

Height, $8\frac{1}{2}$ inches; diameter, $8\frac{1}{2}$ inches.

242 Decorated Famille Rose Vase (Chien Lung)

Richest green ground, beautifully decorated with various fancy flowers and butterflies.

Height, 10 inches; diameter, $6\frac{1}{2}$ inches.

Second Afternoon

243 Pair of Flower Stands (Chien Lung)

Gourd shape; of thin, sonorous paste, and exquisitely decorated in brilliant enamel of five colors. The embellishment consists of flowers and mandarin ducks, all in life-like manner. Very rare pair. Underneath bears a seal mark.

Height, 4 inches; diameter, 3½ inches.

244 Old Glass Bottle (Chien Lung)

Old greenish glass, with peach plants and rocks in high relief. A delicate form.

Height, 5½ inches; diameter, 3½ inches.

245 Small Flower Pot (Chien Lung)

Long square shape and spreading mouth. Of hard, sonorous porcelain, body boldly coated in rich and brilliant pea green glaze.

Height, 4½ inches; width, 6¾ inches.

246 Pair of Handled Wine Cups (Chien Lung)

Eight-side shape, with handle. Dense, sonorous, white, hard paste of exceedingly fine quality, exquisitely decorated with sprays of blossoming mei trees and spreading branches; overhead there are flying sparrows. All artistically executed in brilliant enamel colors of famille rose.

Height, 2 inches; width, 4 inches.

247 Pair of Enamel Table Screens (Chien Lung)

Round shape, pure white ground, artistically pencilled with sprays of blossoms which grow among rocks, and spreading branches, on which a bird is perched. Painted in brilliant enamel colors of famille verte. Enclosed in hardwood frames and stands.

Height, with stand, 13½ inches.



No. 554

248 Set of Fancy Enamel Fruit Dishes (Chien Lung)

Peking enamel on copper. In varying shapes and beautifully pencilled blossoms of chrysanthemums and peaches, exquisitely painted in brilliant enamel colors of famille verte. Enclosed in a round hardwood case and with cover.

Diameter, $17\frac{1}{4}$ inches.

249 Enamel Wall Screen (Chien Lung)

Peking enamel on copper. Artistically pencilled, three beautiful ladies holding cups, in brilliant enamel colors of famille verte.

Height, $9\frac{3}{4}$ inches; width, $9\frac{3}{4}$ inches.

250 Four Enamel Wine Cups and Saucers (Chien Lung)

Canton enamel on copper. Both in square shapes, beautifully pencilled panels; decorated with Pu Ko styles or Eight Antiques. In brilliant enamel colors of famille rose.

Height, cups, $1\frac{1}{2}$ inches; square, $1\frac{3}{4}$ inches.

Saucers, diameter, 4 inches.

251 Pair of Enamel Tea Cups and Saucers (Chien Lung)

Canton enamel on copper. Powder green ground, beautifully decorated sprays, mowtan flowers, etc. Exquisitely pencilled in brilliant enamel colors of famille rose.

Height, $3\frac{1}{4}$ inches.

252 Blue and White Water Bowl (Kang Hsi)

Sonorous, white, porcelanous ware, melon shape, luxuriantly decorated in lustrous cobalt on a brilliant white ground. The embellishment consists of chrysanthemums and arabesque; conventional borders on the rim. Very rare specimen. Height, 3 inches; diameter, $3\frac{3}{4}$ inches.

253 Blue and White Bottle (Chien Lung)

Hard, white, porcelanous, in cobalt blue underglaze of dragons rising from the clouds. A graceful form.

Height, 8 inches; diameter, $4\frac{1}{2}$ inches.

Second Afternoon

254 Blue and White Pen Holder (Kang Hsi)

Hard, white porcelain, in brilliant cobalt blue decoration of dragons rising from crested waves and delicate Pu Ku styles or Eight Antiques. All beautifully pencilled.

Height, $6\frac{1}{4}$ inches; diameter, $7\frac{1}{2}$ inches.

255 Blue and White Deep Plate (Kang Hsi)

Hard, sonorous, porcelanous ware. Decoration of mountains and landscape, arbor and stream view in the foreground, beautifully painted in brilliant blue applied under the glaze. Bears a special seal mark.

Diameter, $6\frac{1}{4}$ inches.

256 Pair of Fancy Wine Cups (Ming)

Shallow body, broad foot, and with open mouth. Thin, sonorous porcelain, beautifully painted with blossoms, chrysanthemum flowers and arabesque leaves in bearing, exquisitely executed in two shades of underglaze cobalt blue on a brilliant white ground.

Height, $1\frac{1}{2}$ inches; diameter, 3 inches.

257 Blue and White Bottle (Kang Hsi)

Globular body, broad foot, slightly tapering neck and spreading mouth. Of sonorous, hard paste, artistically painted, the figures, palaces and clouds exquisitely executed in two shades of underglaze blue, on a brilliant white ground.

Height, $8\frac{3}{4}$ inches; diameter, 4 inches.

258 Blue and White Vase (Kang Hsi)

Ovoid, long body. Hard, white paste, in cobalt blue underglaze of phoenix and dragons pursuing the pearls amidst the clouds.

Height, $11\frac{1}{2}$ inches; diameter, $4\frac{1}{4}$ inches.

259 Blue and White Vase (Kang Hsi)

Beaker shape, white, porcelanous, in richest cobalt blue underglaze, curious decoration. Underneath bears a double blue ring and characters of its reign.

Height, $9\frac{1}{4}$ inches; diameter, 5 inches.

260 Delicate Blue and White Small Vase (Kang Hsi)

Of graceful shape and finished technique; oviform body, low neck, broad foot and spreading mouth. Of exceedingly fine, thin porcelain, beautifully embellished with sprays of flowers and rocks, painted in brilliant cobalt blue glaze. Height, $5\frac{1}{4}$ inches; diameter, $2\frac{1}{4}$ inches.

261 Pair of Blue and White Plates (Chien Lung)

Hard, thin, sonorous paste. Beautifully pencilled blossoming mei tree and sparrow perched thereon, in cobalt blue of two shades, fancy tiny flowers on the band. Underneath bears a special mark of the owner's name.

Diameter, $6\frac{1}{4}$ inches.

262 Blue and White Vase (Yung Ching)

Sonorous, hard paste. Decorated in lustrous cobalt blue on a brilliant white ground and embellished with season flowers in a very artistic manner.

Height, $7\frac{3}{4}$ inches; diameter, 5 inches.

263 Blue and White Small Jar (Ming)

Clear, white, hard paste, of exceedingly fine quality. Painted in underglaze blue of brilliant quality; it represents a phoenix standing on a rock singing. Under the shade of the trees are birds feeding.

Height, 5 inches; diameter, 5 inches.

Second Afternoon

264 Blue and White Vase (Kang Hsi)

Ovoid body, straight neck and spreading mouth. Glazed in brilliant cobalt blue, with figures, buildings, rocks, streams and trees. A fine example.

Height, $8\frac{1}{4}$ inches; diameter, $3\frac{1}{2}$ inches.

265 Blue and White Bottle (Kang Hsi)

Hard, white porcelain, with two panels on both sides with dragon, tiger, birds, rocks and Pu Ko styles or Eight Antiques. Underbase is impressed with six characters.

Height, 8 inches; diameter, $3\frac{1}{4}$ inches.

266 Blue and White Bottle (Kang Hsi)

Sonorous, hard paste, globular body, long neck and bulbous mouth. Curious decoration, representing figures and palaces; the whole is most exquisitely painted in brilliant cobalt blue glaze.

Height, $10\frac{3}{4}$ inches; diameter, $5\frac{1}{4}$ inches.

267 Fancy Jar (Yung Ching)

Pure white ground on cobalt blue, decorations of phoenix and clouds; two delicate borders on rim and foot.

Height, $7\frac{1}{4}$ inches; diameter, 6 inches.

268 Blue and White Tall Vase (Kang Hsi)

Ovoid, high body; short, tapering neck, broad foot and spreading mouth. Artistically painted, representing a bird standing on a rock; overhead are many flying sparrows. The blossoms are growing from the rock base. Luxuriantly decorated in lustrous cobalt of opaque quality on a brilliant white ground. Underneath bears a seal mark.

Height, 17 inches; diameter, $7\frac{1}{4}$ inches.



No. 566

269 Blue and White Bottle (Kang Hsi)

Pure white, hard paste of the Kang Hsi period. Finely painted in the Pu Ku style or Eight Antiques, with blossoms of chrysanthemums, key-shaped borders on the rim. All painted in brilliant underglaze blue and in white reserves. Height, 9 inches; diameter, $5\frac{1}{4}$ inches.

270 Blue and White Pen Holder (Kang Hsi)

Hard, white, porcelanous, on cobalt blue glaze, boldly decorated with four panels, artistically pencilled Pu Ku styles or Eight Antiques; the fields display numerous fancy flowers. Height, 6 inches; diameter, $7\frac{1}{2}$ inches.

271 Pair of Fruit Boxes (Ming)

Dense, sonorous, porcelanous, finely painted five-clawed dragons, cloud form and charming pearls, all in brilliant cobalt blue. The underbase is impressed with six-character mark. Height, $3\frac{1}{2}$ inches; width, $8\frac{1}{2}$ inches.

272 Pair of Blue and White Plates (Yung Ching)

Thin, sonorous porcelain of exceedingly fine quality, representing a Kylin carrying a sacred book and crossing a waving sea, in brilliant cobalt blue; a wide band of floral and leaf scroll and an outer band of wave design. Seal mark underneath. Diameter, $7\frac{1}{2}$ inches.

273 Blue and White Jar (Ming)

An unique oviform jar. Sonorous, hard porcelain, and exquisitely decorated, with scenes depicting a musical party of scholars, exquisitely executed in two shades of underglaze blue on a brilliant white ground. Underneath the foot bears a double circle six-character mark of the period. Height, 5 inches; diameter, 5 inches.

Second Afternoon

274 Blue and White Vase (Kang Hsi)

Graceful shape, pure white, hard paste, of exceedingly fine quality, exquisitely pencilled flower basket, in which are blossoming flowers and spreading branches, delicately painted in two shades of cobalt blue mingled with peach bloom tints. Height, 8 inches; diameter, 4 inches.

275 Blue and White Tall Vase (Kang Hsi)

Beaker-shaped, of clear, white, hard paste. The body decorated with mei flowers and crackling ices, delicately pencilled in two shades of brilliant cobalt blue. Underneath bears a seal mark.

Height, $17\frac{1}{4}$ inches; diameter, $8\frac{3}{4}$ inches.

[*See Illustration*]

276 Blue and White Vase (Kang Hsi)

Of an inverted, elongated pear shape. Round, high body, broad foot and spreading mouth. Clear, white, hard paste of exceedingly fine quality. Profusely decorated in reserve and outline painted with blossoming mei tree, the roots growing among the rocks, in two shades of brilliant underglaze cobalt blue and peach bloom tints. A graceful specimen. Height, $7\frac{1}{2}$ inches; diameter, $3\frac{1}{4}$ inches.

277 Blue and White Pen Holder (Kang Hsi)

Deep, round body, broad foot and spreading mouth. Hard, sonorous, white porcelain. Beautifully decorated with chrysanthemums in brilliant cobalt blue, mingled with peach bloom tints on a pure white ground. Flowers are growing among rocks; overhead is a flying phoenix. Underneath bears a seal mark of the period.

Height, 6 inches; diameter, $7\frac{1}{2}$ inches.

278 Unique Buddhist Ornament (An Old Japanese Antique) 18th Century

Quadrilateral shape, in two parts. All in delicate open work in high relief, and the style in imitation of bronze vessels; the whole is artistically executed in brilliant enamel of five colors, and delicately pencilled in gold.

Height, 6 inches; width, $5\frac{3}{4}$ inches.

279 Sang de Boeuf Bottle (Chien Lung)

Globular body, with short, slender neck and broad base. Covered in rich Sang de Boeuf glaze and minutely cracked. A graceful specimen.

Height, $13\frac{1}{2}$ inches; diameter, $6\frac{1}{2}$ inches.

280 Decorated Plate (Chien Lung)

Dense, hard paste, beautifully decorated in brilliant famille verte enamels with a scene depicting a landscape, with houses, pagodas, river view and trees in the foreground, and spreading leaves of the lotus flower, on which are blossoms in various colors. Diameter, 9 inches.

281 Famille Verte Plate (Yung Ching)

Of sonorous, hard paste and beautiful decoration in brilliant enamel colors of famille verte. The embellishment consists of various ornaments known as the Hundred Antiques. On the border is the representation of blossoming flowers in various colors, the whole most exquisitely drawn. Diameter, $12\frac{1}{4}$ inches.

282 White Porcelain Vase (Yung Ching)

Ovoid, long body and spreading mouth. Hard, white paste, beautifully decorated with chrysanthemum blossoms; overhead are flying storks.

Height, $8\frac{3}{4}$ inches; diameter, $5\frac{1}{2}$ inches.

Second Afternoon

283 Pair of Unique Pottery Wall Vases (Ming)

Hard, heavy pottery. In ancient bronze vessel form, decorated with two mask rings on the rim, low neck and expanding mouth. Whole body coated in green glaze.

Height, 6½ inches.

284 Imperial Wall Vase (Chien Lung)

Delicate gourd shape. Hard, sonorous, porcelanous, beautifully decorated with panels on upper and lower parts. Within these panels are Imperial poems and flowers. Surrounding the panels are sprays in floral forms. All in brilliant enamel colors of famille rose. Underneath bears a mark of the period.

Height, 9¼ inches.

285 Pair of Tall Vases (Chien Lung)

Flower pot shape. Thin, sonorous paste, coated with a brilliant green ground and beautifully pencilled blossoms. Covered with brilliant enamel of famille rose.

Height, 4 inches.

286 Yellowish Wall Vase (Chien Lung)

In book form. Thin, sonorous, porcelanous; coated in yellowish ground and beautifully pencilled chrysanthemum flowers. All coated with brilliant enamel colors of famille rose.

Height, 5½ inches.

287 Pair of Coral Red Wall Vases (Chien Lung)

Basket shape; sonorous, white paste, coral red ground and gold design. Beautifully decorated with two panels, with sprays and flowers, in brilliant enamel colors of famille rose.

Height, 4½ inches.

288 Decorated Wall Vase (Chien Lung)

Graceful, beaker-shaped. Sonorous, white paste, beautifully pencilled with Three Star Gods, Fu, Lu and Shou; different types of faces and various kinds of robes. All in brilliant enamel colors of famille rose.

Height, 8½ inches.

289 Remarkable Wall Vase (Yung Ching)

Graceful shape, with tubular handles on neck. Hard, heavy, sonorous, porcelanous. Exquisitely pencilled fairy holding a ju-i. She stands under the shade of a palm tree speaking to her maid-servant, a spotted deer is following with a fairy plant in its mouth. Beautifully painted in brilliant enamel five colors.

Height, 9½ inches.

290 Pair of Wall Vases (Chien Lung)

In graceful flower basket shapes. Thin, sonorous, porcelanous; one is covered with a yellow ground, and the other in green. Both exquisitely painted with chrysanthemum flowers and pencilled with brilliant enamel colors of famille verte.

Height, 4½ inches.

291 Pea Green Wall Vase (Chien Lung)

Bottle-shaped, beautifully decorated with four floral bands. Hard, heavy, porcelanous, and richly coated with thick pea green glaze.

Height, 6½ inches.

292 Pair of Vase-Shaped Wall Vases (Chien Lung)

Have two mask rings on the rims. Of thin, sonorous, porcelanous ware, beautifully pencilled, children playing in the shade of a tree in different costumes. Covered with brilliant enamel colors of famille rose.

Height, 7 inches.

Second Afternoon

293 Light Blue Bottle (Chien Lung)

Hard, thin, porcelaneous ware. Flattened, oviform body, slightly tapering neck and bulbous mouth, with two floral pattern handles on the neck. Body of beautiful foiled flanges, and entirely coated with rich light blue glaze. The base is unglazed.

Height, $3\frac{3}{4}$ inches; width, 5 inches.

294 Large Celadon Jar (Ming)

High, oviform body, slight base, broad shoulders, low neck and small mouth. Grayish white, porcelaneous ware burnt red in the firing and covered with a blue green transparent glaze, accidentally crackled, and decorated with a molded pattern of a formal scroll of flowers and leaves; lotus leaves on the base.

Height, 13 inches; diameter, $12\frac{1}{2}$ inches.

295 Exceptional Large Vase (Han)

Miniature vase of baluster shape, with two small handles and masks' ring. Parobably indicating a bronze vessel of the Shang Dynasty, 1766-1122 B.C. Hard, gray stoneware, covered with turquoise blue, finely crackled. It was excavated within the last few years.

Height, $19\frac{3}{4}$ inches; diameter, $13\frac{1}{4}$ inches.

296 Set of Small Screens (Chien Lung)

In eight leaves or panels and, when opened out, forms a complete picture with a wealth of detail. Illustrates the Premier Quio Tsze Nee's Birthday, of the Tang Dynasty. Each panel shows a different grade of officer congratulating him, and numerous attendants following, in various types and different costumes. The lower parts are panelled with Eight Fairies holding instruments. The upper part panelled with blue and white designs, also lower borders.

Height, each leaf, $32\frac{1}{2}$ inches; width, $6\frac{1}{2}$ inches.

297 Pair of Famille Verte Flower Pots (Ch'aich'ing)

Deep, round body and expanding mouth. Hard, sonorous, porcelanous, artistically pencilled with blossoms of season flowers and birds, delicately pencilled in brilliant enamel colors of famille rose.

Height, 6 inches; diameter, 1 inch.

298 Lung Chuan or Celadon Incense Burner (Sung)

Deep, round body, wide mouth and three short feet. Grayish white, porcelanous ware, covered with a smooth blue green, transparent celadon glaze, accidentally crackled, and decorated with a molded pattern of a formal scroll of flowers. Height, 7 inches; diameter, $10\frac{3}{4}$ inches.

299 Tea Dust Vase (Chien Lung)

Oviform body; wide, long neck and broad foot. Hard porcelain, covered with an exquisite soft, yet bright, tint of olive green tea dust glaze on brown ochre under body. Underneath bears a mark of the period. A graceful form and rare color. Tea dust colored pieces were said to be reserved for Imperial use.

Height, $13\frac{1}{2}$ inches; diameter, $9\frac{1}{2}$ inches.

300 Peacock Blue Jar (Chien Lung)

Oviform shape, with slight rim and spreading foot. Hard, white porcelain, covered with a brilliant glaze of the subtle tint of peacock blue, probably the color called by Chinese peacock green glaze, minutely crackled. The base unglazed. Height, $7\frac{1}{2}$ inches; diameter, 8 inches.

THIRD DAY'S SALE
FRIDAY, FEBRUARY 2nd, 1917
At 2.30 o'clock P. M.

301 Yi-Hsing Figure (Ming)

Blue clay, hard, like stoneware, covered with a brilliant dark brown glaze. Vigorously modelled old fairy or Easter Star God seated against a pillar, one hand resting on knee and the other holding a sacred ball. The robes are skillfully draped. Height, $3\frac{3}{4}$ inches.

302 Fancy Open Work Flower Jardiniere (Chien Lung)

Oviform shape, deep body and expanding mouth. Sonorous, thin porcelain, in delicate open work of basket pattern, and covered in brilliant enamel colors of coral red, yellow and white. A fine example.

Height, 3 inches; width, $9\frac{1}{2}$ inches.

303 Rare Tea Dust Jardiniere (Chien Lung)

Long, quadrilateral shape, with foliage pattern at four sides. Hard, dense, porcelaneous ware. The body coated with a tea dust color. Underneath bears a mark of the period. Height, $3\frac{1}{2}$ inches; width, $8\frac{3}{4}$ inches.

304 Light Blue Flower Pot (Chien Lung)

Long, quadrilateral shape; deep body and expanding mouth. Hard, heavy, porcelaneous ware, the whole body coated with a single color in light blue glaze, running evenly and brilliantly.

Height, $6\frac{1}{2}$ inches; width, 9 inches.



No. 566a

305 Unique Toad (Yung Ching)

Hard, sonorous porcelain, an enormous four-legged spotted toad with staring eyes and mouth open. Covered with brilliant enamels of famille verte, green being used for the body of the toad, except under mouth, which is pink, and eyes of black and golden. An attractive and well finished specimen. Height, $5\frac{1}{2}$ inches.

306 Dark Aubergine Jar (Yung Ching)

Oviform body, broad foot and slightly short neck, with open mouth. Sonorous, hard, heavy porcelain, the whole body covered in thick, brilliant dark aubergine glaze.

Height, $10\frac{1}{2}$ inches; diameter, $7\frac{3}{4}$ inches.

307 Rare Porcelain Hand Warmer (Chien Lung)

Graceful, ovoid body and original cover. Hard, heavy, sonorous, porcelanous ware. Body boldly coated with an ancient bronze color, and beautifully decorated with blossoming season flowers and flying butterflies; the cover top in delicate open work of dragons in pursuit of the sacred pearls among clouds, in enamel colors of famille verte.

Height, 3 inches; diameter, 5 inches.

308 Rare Bowl (Sung)

Hard, sonorous paste, coated in rich and brilliant, warm, creamy buff glaze, and unornamented. A graceful and fine example. Height, $2\frac{3}{4}$ inches; diameter, $7\frac{3}{4}$ inches.

309 Dark Bottle (Chien Lung)

Flattened, ovoid body, tapering neck, broad foot and expanding mouth. Hard, white porcelain, coated in a thick, brilliant, dark glaze of even color.

Height, $4\frac{1}{4}$ inches; diameter, 3 inches.

Third Afternoon

310 Rare Tea Dust Bottle (Chien Lung)

Flattened, oviform body, slightly long neck and broad foot. Hard, white porcelain, covered with a thick, brilliant glaze of exquisite tea dust, of even color and purity. An exceptional form of fine quality.

Height, $5\frac{3}{4}$ inches; diameter, 4 inches.

311 Remarkable and Exceptional Stone Buddha (Tang)

Yellowish stone, coated in natural colors. The figure is of the Earth God. The head is particularly well modelled, with a stern face; has the long-lobed ears, emblematical of wisdom, and hands in centre with palms and fingers up. He stands on a lotus base in a proud attitude. The robes are voluminous and particularly well sculptured and undercut.

Height, 12 inches.

312 Old Iron Buddhist Head (Tang)

Head is covered with short curls; has the long-lobed ears, emblematical of wisdom, and boss on forehead; the face is particularly pleasing. Height, with stand. $6\frac{3}{4}$ inches.

313 Old Stone Buddhist Head (Tang)

Bluish in color. Characteristic nodular hair and long-lobed ears and sacred boss on forehead. Vigorously modelled.

Height, $5\frac{1}{2}$ inches.

314 Old Stone Buddha (Tang)

Figure is seated, cross-legged, with soles of feet upwards, hands resting on the knees. Head with characteristic nodular hair and long-lobed ears and the sacred boss on forehead. The robes are skillfully draped, exposing the broad chest of the deity.

Height, $14\frac{1}{2}$ inches.

315 Old Iron Buddha's Head (Wei)

Vigorously modelled, and full of character, with a stern countenance; hair dressed in a military manner; has the long-lobed ears, emblematical of wisdom; very dignified.

Height, 13½ inches.

316 Flambé Double Gourd Bottle (Yung Ching)

Typical shape, in miniature, of a double-gourd bottle. Hard, heavy, porcelanous ware, coated with a transmutation glaze of rich, delicate, purplish blue hue, splashed in waterfall drippings with bluish grays, and with café au lait crackle. Of exceedingly fine quality and exceptional class of glaze which is almost Chuan Yao ware of Yuen Dynasty. Base glazed white and faintly crackled in irregular forms.

Height, 14½ inches; diameter, 9½ inches.

317 White Porcelain Flower Pot (Yung Ching)

Deep body, high neck, broad base and expanding mouth. Hard, heavy, porcelanous ware, pure white in a single coloring, the glaze running evenly and brilliantly. Beautifully decorated with blossoming mei trees with sparrows perched thereon. Height, 9 inches; diameter, 10 inches.

318 Lung Chuan Vase (Ming)

Ovoid body; tall, cylindrical neck with spreading mouth and slightly spreading base. Gray white, porcelanous ware burnt rusty brown at the raw edge of the base, and covered with a beautiful gray green celadon glaze of faint bluish tone, minutely crackled; body boldly unornamented.

Height, 18 inches; diameter, 8 inches.

319 Lung Chuan Yao or Celadon Bottle (Ming)

Pear shape, globular body, slender neck and short base. Heavy, hard, grayish white, porcelanous ware burnt red in the firing, and covered with a beautiful blue green transparent glaze, accidentally crackled, and decorated with a molded pattern of a formal scroll of flowers and leaves. Height, 18 inches; diameter, 8¼ inches.

Third Afternoon

320 Lung Chuan or Celadon Vase (Ming)

High, oviform body, wide base and low neck, open mouth. Gray white, porcelanous ware, burnt rusty brown at the raw edge of the base, and covered with a beautiful gray green celadon glaze of faint bluish tone. On the body is a bold peony scroll in relief, and below it is a belt of stiff plantain leaves carved in relief. The base has a flower leaf pattern, lightly crackled in irregular form.

Height, $13\frac{1}{2}$ inches; diameter, $7\frac{3}{4}$ inches.

321 Wonderful Celadon Jar (Sung)

Ovoid body and broad, high shoulder. Hard, dense porcelain of musical tone, bearing the chrysanthemum floral designs on the whole body and symbols pattern at the base. Glazed in thick, brilliant, greenish, celadon coloring. It is a rare treasure, and is most beautifully executed.

Height, 11 inches; diameter, $7\frac{3}{4}$ inches.

[*See Illustration*]

322 Fukien Porcelain Vase (Chien Lung)

Ovoid, long body, spreading mouth, with two masks on both sides of the rim. Hard, Fukien porcelain, coated with a cream white glaze.

Height, $10\frac{1}{2}$ inches; diameter, $4\frac{1}{2}$ inches.

323 Lung Chuan or Celadon Jar (Sung)

Graceful melon shape. Grayish white, porcelanous ware, burnt red in the firing, and covered with a blue green transparent glaze, accidentally crackled, and unornamented.

Height, $4\frac{1}{2}$ inches; diameter, $5\frac{3}{4}$ inches.

324 Pair of Old Glass Tea Cups with Covers (Chien Lung)

Peking old glass of best quality; the glass is pure white. Deep body, slight foot and expanding mouth, with dome cover. Brilliantly polished.

Height, $2\frac{1}{2}$ inches; diameter, 4 inches.

325 Dark Aubergine Jar (Yung Ching)

Hard, porcelanous ware. An unusual shape, open mouth and wide base. Body coated with a dark aubergine glaze.

Height, $5\frac{1}{2}$ inches; diameter, $3\frac{1}{4}$ inches.

326 Yi-Hsing Vase (Ming)

Yi-Hsing, hard, gray paste; flattened, oviform body, slight high neck, with two tubular handles on the neck, and broad foot. Blue glaze on whole body, carried in interior of neck and underneath.

Height, $13\frac{3}{4}$ inches; diameter, $8\frac{1}{2}$ inches.

327 Sh'a Tai (Sandy Paste) Vase (Ming)

An unusual shape, in imitation of an ancient bronze vessel. Graceful beaker shape in miniature, with expanding base, band in centre and trumpet-shaped head. Hard, heavy, sandy ware, the whole body coated in a brilliant light yellowish glaze and faintly crackled in irregular form. The glaze carried in interior of neck and under base.

Height, $6\frac{3}{4}$ inches; diameter, $5\frac{3}{4}$ inches.

328 Chuan Yao Plate (Yuen)

Hard, heavy stoneware. In the form of a bulb. Body coated in Chuan Yea glaze, and minutely crackled.

Diameter, $8\frac{1}{2}$ inches.

329 T'u Ting Yao Vase (Ming)

Hard, porcelanous ware, resembling soft paste; covered with a thick, unctuous, creamy white glaze, like congealed lard, and very characteristic of this ware. Graceful shape; the base is also glazed.

Height, 11 inches; diameter, 7 inches.

Third Afternoon

330 Delicate Famille Rose Figure (Chien Lung)

Hard, thin, sonorous, porcelanous ware. Strongly modelled with two figures seated on rocks; one is wearing a green robe, while the other wears a reddish robe and green trousers, and in his hands he holds two gold sycees. All glazed in brilliant enamel colors of famille rose.

Height, 8 inches; width, $6\frac{1}{2}$ inches.

331 Fukien Figure of Kuan-Yin (Ming)

Heavy Fukien porcelain, with rich, thick, creamy glaze, blanc de chine. The figure stands in a contemplative attitude, with hands outstretched, and is dignified and graceful. The robes are simple and flowing. A cowl covers the head. The base is in an unusual design of conventional clouds.

Height, $17\frac{1}{2}$ inches.

332 Unique and Remarkable Porcelain Figure (Yuen)

Vigorously modelled figure of the Lohan, a delicate finish in the smiling face and open mouth, showing tiny teeth; the robes are skillfully draped, exposing the broad chest of the deity; hands and feet are bare. The imposing figure is seated against a bag, with the right leg crossed over the left. Hard, white, porcelanous ware, covered with warm creamy and clouded brown glaze, and minutely crackled.

Height, $4\frac{3}{4}$ inches.

333 Large Kao Yao Bowl (Ming)

Deep body and wide mouth. Hard, heavy, white, porcelanous ware, and coated with a brilliant celadon glaze with crackle. Height, 5 inches; diameter, $8\frac{1}{2}$ inches.

334 Rare Bowl (Sung)

Graceful shape, of deep body, broad foot and wide mouth. Hard, heavy, reddish buff stoneware, covered with a brilliant turquoise blue glaze and faintly crackled. Excavated within the last few years.

Height, $2\frac{3}{4}$ inches; diameter, 7 inches.

335 Fukien Figure of Kuan-Yin with Infant (Ming)

Fukien translucent porcelain, covered with a soft and brilliant glaze of cream white. The Goddess of Charity or Mercy, to whom childless women pray. She is seated on a rocky pedestal; at base of the pedestal and above the crest of waves are lotus flowers growing among rocks; the child is vigorously modeled, and has a lotus flower in its hand; a cowl covers the head; hands and fingers are very delicate. A fine and well modelled group.

Height, $10\frac{3}{4}$ inches.

336 Pair of Fukien Porcelain Kylins (Ming)

Fukien porcelain, with exceptionally brilliant and even thick glaze of pure white tint. These mythical lions are called Dogs of Fu, being the guardians of Buddhist temples and images; with prominent teeth, scroll-like form of hair, long mane, etc. The animals are seated on their haunches, with one paw against the ball. Exquisitely modelled.

Height, $5\frac{1}{4}$ inches.

337 Porcelain Pillow (Sung)

This black-white colored porcelain, known as the Shan T'sai, is in the form of a quadrilateral pillow. The body is of a soft and glossy substance; the glaze is pure white, with figures and floral patterns. The posture is charming, and the shape is delicate and well proportioned.

Length, 5 inches; width, 12 inches.

338 White Porcelain Kylin (Ming)

Hard, sonorous, porcelanous ware, finely modelled, showing a seated Kylin on an oblong pedestal. Fierce expression; covered with a rich, brilliant, warm, creamy white glaze.

Height, 6 inches.

Third Afternoon

339 White Porcelain Fu Dog (Ming)

Seated on an oblong pedestal, skillfully modelled; covered with a very brilliant, thick, white glaze.

Height, $6\frac{1}{2}$ inches.

340 Fancy Tea Leaf Bottle (Chien Lung)

Hard, heavy paste. Quadrilateral shape; all coated with a thick powder blue glaze, and beautifully undercut angular leimen fret pattern displayed on the whole ground.

Height, $5\frac{1}{4}$ inches; width, $3\frac{1}{4}$ inches.

341 Decorated Bottle (Yung Ching)

Globular body, wide base, short neck and spreading mouth. Hard, sonorous paste, and beautiful sprays of peony flowers, painted in natural colors, glazed in rich and brilliant enamel colors of famille rose.

Height, $6\frac{3}{4}$ inches; diameter, $3\frac{1}{4}$ inches.

342 Light Blue Bowl (Kang Hsi)

Graceful form, small body and expanding mouth. Sonorous, white porcelain, body covered with a thick, brilliant light blue glaze and unornamented. Underneath bears a mark of the owner's name.

Height, $3\frac{1}{4}$ inches; diameter, $8\frac{1}{4}$ inches.

343 Quadrilateral Incense Burner (Sung)

Long, high, expanding handles, decorated in high relief with dragon and flowers. Pottery body, covered with a yellow, green and aubergine coloring. Has carved wood stand and cover.

Height, $6\frac{1}{2}$ inches; width, $6\frac{1}{2}$ inches.



344 Kakemono (Ming)

Lady Playing with a Butterfly, by K'ang Zur. This picture depicts a lady, with a beautiful complexion and lovely eyes; she is leaning against a tree, playing with a butterfly which is fluttering in the breeze; the scene suggests a lady's dainty and fragrant boudoir.

Size, 56 inches x 29 inches.

345 Kakemono (Tang)

Portrait, by unknown artist. This is a portrait of an ancient Chinese lady, wearing a red robe of very beautiful ancient hue. She is seated on a chair.

Size, 57½ inches x 35 inches.

346 Kakemono (Yuen)

A Bold Horse, by Chao Yung. This picture shows a black and white horse standing proudly, with its head erect, and tied to a tree. The muscles are developed and long mane, which naturally makes a handsome appearance. The strength and sharpness in using the brush, moreover, distinguishes the artist from the painter of mediocre ability. It is, indeed, a very rare treasure!

Size, 43 inches x 17 inches.

347 Kakemono (Sung)

A Beautiful Lady, by R'ing Ma. In this picture is depicted a beautiful lady standing under the shade of a plum tree; she is wearing a beautiful silk robe. The face is exquisitely and handsomely adorned, and gives a very charming impression of a winter morning, with the blossoming plum flowers gently waving in the breeze.

Size, 34 inches x 20 inches.

Third Afternoon

348 Kakemono (Ming)

Dragon Flying Among Clouds, by Chang Sze Yung. The picture depicts a dragon wriggling among clouds, with everything painted naturally. Such a picture is wonderful and impossible to describe. Formerly Chang Shun Heu painted a dragon which flew away when the painter painted its eyes, as it was told. From a view of this painting Chang Sze Yung had almost obtained the same ability.

Size, 57 inches x 35 inches.

349 Kakemono (Ming)

Blossoming Flowers and a Spring Bird, by Ling Hun San. This picture depicts blossoms of mountain tea flowers in great profusion and loveliness. On a branch there is a spring bird with gray white plumage chirping amiably. The coloring is very rich, and the picture was one of the best in the Academy of Art.

Size, 39½ inches x 18 inches.

350 Kakemono (Sung)

A Group of Imperial Concubines, by Chow Van Ku. In this picture there are many Imperial concubines, and their Emperor; all of their faces are beautifully adorned. One of the ladies is looking toward a bear, while the others are speaking with the Emperor. The lines and folds of the ladies' garments are very graceful, and show remarkable skill in drapery, giving the garments the appearance of silk floating in the air, and the houses, lake and rocks are very charming, making the picture a work of art of the highest order.

Size, 58 inches x 18 inches.

351 Kakemono (Ming)

A Mother's Pride, by T'ang Hen. This picture shows a very handsome room in which the children are playing. Some of the children are holding toys in their hands, while others are clasped in their mother's arms. They are all dressed in very beautiful clothes, and all the children are rejoicing and offering congratulations. Such a work displays the highest skill and science of art.

Size, 30 x 15½ inches.

352 Kakemono (Ming)

A Charming Fairy, by Kiu Yin. This picture depicts a noble woman impressing her charming manner. Slenderness and brightness in the painting are proportionate. Holding a flower basket and an ancient fan, and wearing an exquisite and beautiful garment. Around her sides are all water forms. The artist has depicted both expression and thoughts truly.

Size, 34 x 19 inches.

Artist's Biography: Kiu Yin has been summoned to the Imperial Academy of painting. He was very superior in painting noble women. His style resembled that of the painters in the Tang dynasty.

[See Illustration]

353 Kakemono (Ming)

The Daughter of the Heaven, by Hwang T'ai Wu. This picture shows an angel dancing among the clouds and scattering flowers onto the world. Her face is beautiful and she wears a very handsome silk garment. The whole work is an ideal effect, and is one of the finest masterpieces among ancient pictures.

Size, 40½ x 16 inches.

354 (Kakemono (Sung))

Children Playing, by Su Han Chen. This picture shows four children playing together under the shade of a tree. One is seated against the table, sleeping, while three are joking; the table is spread with various kinds of toys. They are dressed in very beautiful clothes and all are rejoicing.

Size, 29 x 14 inches.

Third Afternoon

355 Kakemono (Ming)

Ducks and Flowers, by Ho Fan. A pair of ducks with bright plumage, standing under hibiscus flowers. The artist's work is very clear and attractive. Signed, and inscribed with a verse of poetry, Size, 46 x 20 inches.

Artist's Biography: Ho Fan, also called Shi-Chang, was an artist of the Imperial Academy of the Ming Dynasty. His chief works are flowers and birds.

356 Kakemono (Yuen)

Emerging from the Imperial Bath, by King T'ing. This picture illustrates a story of Yang Kwei Fei, the famous concubine of the Emperor Yuen Tsung of the Tang Dynasty. Her name was Tai-chen, she was exquisitely beautiful and a woman of great ability and intelligence, she was greatly beloved by the Emperor. In this picture Yang Kwei-Fei appears as if she had just emerged from the bath, arrayed in some gauzy garment. Size, 37 x 19 inches.

357 Kakemono (Yuen)

Landscape and Figures, by Tsao Ling. This painting shows a wise man riding a black horse and holding a bow, beneath a tall pine tree, behind him appears three boys, all of whom are wearing different clothing. The painter evidently wielded a facile brush, and entirely escaped the conventional. Size, 35 x 14 inches.

358 Kakemono (Yuen)

Poetical Composition, Tung Tree, by Leng Chi Yen. In this painting the artist has depicted a beautiful woman reclining on a stone seat in the cool shade of a Tung tree, holding in her hand a musical instrument, on a stone beside her an ancient inkstand; she is thinking and writing as if engaged in the composition of poetry. At the entrance there is running water, with a winding stone railing. The work is free from defect. Size, 47 x 18 $\frac{1}{4}$ inches.

359 Kakemono (Sung)

Mountain and Stream, by Hsia Kwei. This painting depicts mountain ranges and peaks, some of the latter so softly treated that they appear to enter the clouds. The whole presents a strange and weird scene. The impression of a fishing boat appears in the distance.

Size, 50 x 15 inches.

360 Kakemono (Sung)

Storks and Pine Tree, by Li Ti. Depicting a pine tree of great age, on a high ridge, on which rest two storks. The style of the picture is bold and rustic, and without doubt a masterpiece.

Size, 57 x 32 inches.

361 Kakemono (Ming)

Ducks and Flowers, by Ho Fan. A pair of ducks, with fresh, bright plumage, standing under hibiscus flowers. The artist's work is very clear and attractive.

Size, 46 $\frac{3}{4}$ x 22 $\frac{1}{4}$ inches.

362 Kakemono (Ming)

Two Beautiful Ladies Studying, by Tien T'u San Chen. This picture shows two beautiful ladies under the shade of a tree, one is sitting on a rock reading a book, while the other is attentively listening. The garments are very graceful and show remarkable skill in drapery. This work of art displays the highest skill and science.

Size, 35 x 15 $\frac{3}{4}$ inches.

363 Kakemono (Ming)

Portrait of the Wen-Shu Buddha, by T'ing Yun P'an. A Buddha seated on an elephant and holding a ju-i in his hand, wearing a red silk garment. An attendant by his side, wearing a green white robe with a cane in his hand. Both of dignified appearance. Such a treasure is seldom found.

Size, 49 x 23 $\frac{1}{2}$ inches.

Third Afternoon

364 Kakemono (Yuen)

Ancient Pine Tree, by Wu T'sain. This painting depicts an old pine tree, its dry and sapless branches indicating that of several centuries old, the trunk is shrivelled and crinkled, thus showing the high ideal in the painter's mind when wielding his brush. Size, $67\frac{1}{2} \times 35\frac{1}{2}$ inches.

365 Kakemono (Ming)

Reeds and Pheasants, by Zai Pao. The picture depicts reeds and rocks. On the rock there are two pheasants standing erect. Beneath the rocks among the reeds there are eight wild geese. The geese are each in a different position and are life-like. Size, 59 x 30 inches.

366 Kakemono (Ming)

Mountains and Wonderful Streams, by T'ai Van T'sing. The picture depicts a stream in autumn, along which a man is sailing homeward. Western hills showing an evening scene in the distance. Size, 54 x 21 inches.

367 Kakemono (Yuen)

Pheasant, by Ts'ao Seang. Hibiscus and autumn flowers are scattered about, amongst them a golden pheasant, standing alone on the rocks. Has long tail and beautiful feathers. The coloring is very rich and the picture was one of the best in the Academy of Art.

Size, 43 x 24 inches.

368 Kakemono (The Five Dynasties)

Bamboos, Orange Tree and Jonquils, by Hwang Tsien. This painting shows an old orange tree of deep red color, after a frost, and by the rocks at the side of the lake jonquils are scattered about among the flowers, while here and there are some graceful bamboos painted after the ancient style. Size, 58 x $31\frac{1}{4}$ inches.

369 Kakemono (Ming)

The Three Auspicious Stars, artist unknown. Three old men, personifying Happiness, Emolument and Longevity, are standing under a large pine tree. Three children with rejoicing expressions, all of them wearing very handsome garments. The bearing and mien of the old men indicate good breeding and culture. Very great skill is displayed in this extremely natural and graceful picture.

Size, 56 x 37 inches.

370 Kakemono (Ming)

Fairy's Birthday, by T'ang Yin. This painting depicts two fairies standing together rejoicingly. One of the fairies holding a ju-i, while the other is holding a peach, an immortal gift to the fairy and genii. They are dressed in green red garments.

Size, 53½ x 32 inches.

371 Kakemono (Ming)

Snow Scene, by Hwang Noh. Two old poets wearing broad-brimmed cowls and silk garments, riding on donkeys through the snow in search of plum blossoms. In the background are seen two boys carrying a lute and a valuable sword. The painting shows accumulations of snow on the mountains and lowlands; clouds beginning to roll away and allow the blue sky to appear through. The skill of the artist in this picture gives a fine display of wealth and luxury.

Size, 59 x 30 inches.

372 Kakemono (Yuen)

Portrait of Lu Shun Yang, by Ting Ch'in Chi. This painting shows us the fairy named Lu Shun Yang of the Tang Dynasty, attaining the gift of virtue as the first of the Eight Genii, an ancient custom in China.

Size, 61 x 32 inches.

Third Afternoon

373 Kakemono (Yuen)

Phoenix Calling to the Morning Sun, artist unknown. In this painting a beautiful phoenix is standing on a rock. Its plumage is bright and of many colors. By its side blossoms of mountain tea flowers, very natural and attractive. This painting was the most beautifully executed one in the Academy of Art. Size, 60 x 28 inches.

374 Kakemono (Yung Ching)

Quadrilateral shape. Dense, white hard paste, and beautifully decorated with a scene depicting figures, palace and trees in luxuriant foliage, all in brilliant and richest of the five colors. The poems dedicated to the occasion pencilled in cobalt blue.

Size, 3 inches x 4½ inches.

375 Pair of Kao Yao Bowls (Yung Ching)

Hard, porcelaneous ware, coated in rich dark yellow glaze and with faint crackle. A very rare pair.

Height, 3¾ inches; diameter, 8¼ inches.

376 White Porcelain Vase (Kang Hsi)

Ovoid body, short neck, spreading mouth and broad foot. Glazed in a single white color of fine quality.

Height, 7 inches; diameter, 4¼ inches.

377 Decorated Bowl (Chien Lung)

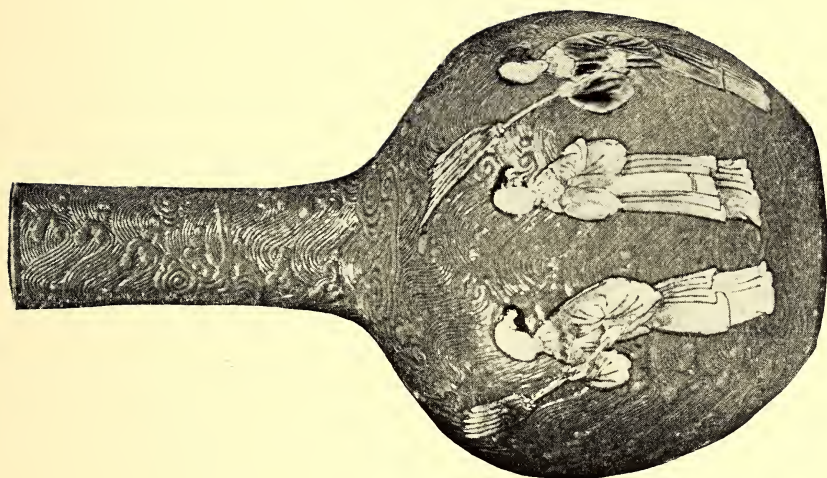
Of graceful shape. Sonorous, thin porcelain; body boldly covered in pinkish glaze and artistically pencilled with varying kinds of blossoms and spreading branches.

Height, 3½ inches; diameter, 7½ inches.

378 Sang de Boeuf Bowl (Ming)

Unusual shape, graceful in form; the interior and exterior are coated in rich and brilliant Sang de Boeuf glaze, and minutely crackled.

Height, 3 inches; diameter, 7½ inches.



No. 579

379 Large Bowl (Chien Lung)

Broad foot and spreading mouth. Whole body glazed in rich and brilliant pea green. Underneath impressed a seal mark. Height, 5 inches; diameter, 10½ inches.

380 Decorated Bowl (Kang Hsi)

Graceful shape. Of sonorous, thin, white paste, artistically pencilled three deer playing and rambling in a pasture in life-like manner. Beautifully decorated in brilliant enamel colors of blackish, light yellow and warm, creamy white. Underneath bears a mark of the period.

Height, 3¾ inches; diameter, 7½ inches.

381 Pair of Pea Green Jars (Chien Lung)

Graceful oviform body, low neck and broad foot. Hard, thin, sonorous, porcelanous ware. The whole body covered in rich, brilliant pea green glaze; and carried in interior and underneath. With special period mark.

Height, 7½ inches; diameter, 6½ inches.

382 Large and Important Pottery Kylin (Ming)

Reddish brown, heavy clay, and slightly baked. The standing Kylin with harness covering on the body. Beautifully glazed in a brilliant, greenish single color.

Height, 18½ inches.

383 Large Pottery Kylin (Ming)

Hard, grayish white stoneware, fired dark reddish brown. Vigorously modelled standing Kylin, richly caparisoned, with saddle covered by a floating saddle cloth; open mouth and fierce looking countenance and long, aubergine mane. Body glazed in a rich, brilliant greenish enamel.

Height, 15½ inches.

Third Afternoon

384 Pair of Coral Red Plates (Yung Ching)

Hard, sonorous, porcelaneous ware. Exterior and interior coated with a brilliant coral red glaze, and beautifully decorated with floral designs in blue colors. Underneath bears a mark of the period. Diameter, $6\frac{1}{4}$ inches.

385 Dark Blue Glass Vase (Chien Lung)

Peking glass of old quality. Oviform body, with foliage pattern all over the body, high, tapering neck and expanding mouth.

Height, $11\frac{1}{2}$ inches; diameter, 6 inches.

386 Peacock Green Bottle (Chien Lung)

Full globular body, broad foot, tapering neck and expanding mouth. Hard, sonorous paste. Whole body coated in a peacock green glaze and minutely cracked.

Height, $5\frac{1}{2}$ inches; diameter, 3 inches.

387 Decorated Bowl (Chien Lung)

Shallow body and expanding mouth. Hard, thin paste, the exterior and interior are beautifully decorated with blossoming mei trees and bamboo in brilliant enamel colors of famille rose. Underneath bears a mark of the period.

Height, $2\frac{1}{2}$ inches; diameter, 7 inches.

388 Porcelain Figure (Ming)

Hard, sonorous porcelain. Vigorously modelled standing figure, with delicate finish bearing a lotus sceptre, artistically executed in delicately blended enamel of the Ming five colors.

Height, $12\frac{1}{2}$ inches.

389 White Porcelain Bottle (Chien Lung)

Globular body, broad foot and long, slender neck. Body artistically painted with sprays of chrysanthemum and arabesque leaves. Key pattern borders. The whole coated in a brilliant white glaze.

Height, $6\frac{1}{2}$ inches; diameter, $3\frac{1}{4}$ inches.

390 Enormous Three-Legged Spotted Toad (Yung Ching)

Hard, sonorous paste. The modelling of this exceptional piece is bold yet delicate in detail; the monster toad is vigorously shaped with staring eyes and open mouth. Coated with a blackish and white glaze.

Length, $10\frac{1}{2}$ inches; height, $5\frac{1}{2}$ inches.

391 Pale blue Jar (Chien Lung)

Ovoid body and short neck. Beautifully decorated with sprays of peach trees.

Height, 7 inches; diameter, $5\frac{1}{4}$ inches.

392 Fancy Five Color Vase (Yung Ching)

Hard, white, porcelanous, artistically pencilled with figures, stork, trees and rocks. All in richest five-color glaze.

Height, $7\frac{3}{4}$ inches; diameter, $3\frac{1}{4}$ inches.

393 Kao Yao Jar (Chien Lung)

Graceful shape. Dense, hard paste of exceedingly fine quality; the whole body coated in a yellowish glaze and with café au lait crackle.

Height, 4 inches; diameter, $3\frac{1}{2}$ inches.

394 Porcelain Incense Burner (Ming)

Delicate oviform body, with two handles upright and expanding, open mouth. The body substance is hard and thick; covered in a rich, brilliant Chun Yao glaze, which is wonderfully curious.

Height, $4\frac{3}{4}$ inches; width, $8\frac{1}{4}$ inches.

395 Pea Green Vase (Kang Hsi)

Hard, thin, porcelanous ware, in a curious bronze vessel form; body entirely glazed with a pea green color and beautifully decorated with a curious pattern. The glaze is carried in interior of neck and underbase.

Height, $6\frac{1}{2}$ inches; diameter, $4\frac{1}{4}$ inches.

Third Afternoon

396 Fancy Enamel Dishes, 10 Pieces (Chien Lung)

Peking enamel on copper. Of graceful, quadrilateral form, and exquisitely painted in Pu Ku style or Eight Antiques. All in beautiful and brilliantly colored enamel of famille rose, and delicately pencilled in gold.

Diameter, 4 inches each.

397 Fancy Enamel Wine Cups, 10 Pieces (Chien Lung)

Peking enamel on copper. With conventional elongated panels, artistically painted in enamel colors of famille rose, enhanced by gilding.

Height, $1\frac{1}{4}$ inches; width, $2\frac{1}{4}$ inches.

398 White Porcelain Bottle (Yung Ching)

Graceful shape; of thin, hard paste, beautifully decorated with lotus plant buds molded in relief; the whole body coated with a brilliant white glaze.

Height, $6\frac{1}{2}$ inches; diameter, $3\frac{1}{4}$ inches.

399 Delicate Porcelain Box (Chien Lung)

Quadrilateral shape; hard, thin, sonorous paste. The top beautifully pencilled with a dragon in pursuit of the pearls amid cloud forms. On the four sides are golden designs in a mat pattern.

Height, $2\frac{1}{2}$ inches; 4 inches square.

400 Fruit Box (Yung Ching)

Round shape, body complete in three parts. Hard, white paste, beautifully decorated with figures, butterflies and tiny fancy designs. All in brilliant enamel colors of famille rose. Height, $4\frac{1}{4}$ inches; diameter, $4\frac{3}{4}$ inches.

Third Afternoon

401 Silk Brocade Embroidered Lady's Overcoat (Chien Lung)

Light blue silk brocade ground, entirely embroidered with season flowers, and gold thread borders on sleeves. The variety of coloring, exquisite needlework and beauty of design make this coat the perfection of embroidery.

Length, 36 inches.

402 Silk Brocade Lady's Apron (Chien Lung)

Pink ground, lower border embroidery with medallions and foliated reserves, tiny fancy flowers and flying butterflies. In soft and harmonious colors.

Length, 37 inches.

403 Soft Silk Pongee Apron (Chien Lung)

Light crimson silk ground, bright colored, on which are numerous embroidered silk bands.

Length, 36 inches.

404 Silk Brocade Table Cover (Chien Lung)

Thick, green silk ground. Elaborate arabesque pattern with medallions and foliated reserves, ornamented with diaper and flower petals. In soft and harmonious colors.

Length, 74 inches; width, 49 inches.

405 Thick Silk Brocade Hanging (Chien Lung)

Rich red ground, embroidered with floss silk in brilliant colors, and also laid gold threads stitched down. Subjects of decoration are of varied character, comprising fairies and blossoming season flowers.

Length, 72 inches; width, 22 inches.

406 Three Kus-su Table Covers (Chien Lung)

Tea green brocade ground; pattern of medallion-like flowers and chrysanthemum, regularly spaced with filling of foliage and flying butterflies in various rich and beautiful colors, and silk embroidered borders.

Length, 31 inches; width, 21½ inches.

Third Afternoon

407 Velvet Table Side Covering

Thin ground of velvet, shot color of light to deep golden yellow. Pattern of butterflies, stork and deer playing in the shade of a tree, with Swastika borders.

Length, 36½ inches; width, 34½ inches.

408 Velvet Table Side Covering (Chien Lung)

Thick ground of velvet; shot color of light to deep golden yellow. Subjects of decoration, two five-clawed dragons in pursuit of rolling discs. The scrolled clouds cover parts of waves, and the same cloud shapes are spread over the rest of the lower border.

Height, 36 inches; width, 39 inches.

409 Silk Embroidered Table Cover (Chien Lung)

This fabric is rare and much valued by Chinese, and consists of bright vegetable colors with floss silk in key pattern ground. Beautiful embroidering in various kinds of conventional floral designs in various brilliant colors, and with light embroidered border. An attractive and uncommon pattern.

Length, 22 inches; width, 12 inches.

410 Silk Embroidered Hanging

Crimson red silk ground, embroidered with thick floss silk in brilliant varied colors, silvery white and gold. Subjects of decoration, nine lions playing among the season flowers.

Length, 78 inches; width, 21 inches.

411 Silk Brocade Table Side Covering

Golden yellow silk ground, with full-faced five-clawed dragon in centre and two rampant dragons in corners. Conventional crested waves and hill pattern around border. All in various brilliant colors, making an effective and harmonious contrast.

Length 38 inches; width, 36 inches.

412 Gold Kus-su Table Side Covering (Chien Lung)

This fabric, called Kos-su by the Chinese, is rare and much valued by connoisseurs, and consists of a gold thread ground, with specially and separately woven silk brocade cut into the various shapes. Full-faced five-clawed dragons occupy the centre of the front, with two others gazing upwards and pursuing the sacred orb; with silk embroidered borders.

Length, 41 inches; width, $33\frac{1}{2}$ inches.

413 Silk Embroidered Hanging

Crimson silk ground, embroidered with a man on a Kylin's back, a boy following and blossoms of season flowers. With long stitches of floss silk in various bright colors. Intended for a wedding gift as a subject showing good wishes. Length, 78 inches; height, $23\frac{1}{2}$ inches.

414 Silk Brocade Embroidered Lady's Overcoat (Chien Lung)

Rich, brilliant, red brocade ground; pattern of melallion-like flowers, regularly spaced with filling of foliage, butterflies and other symbolic ornaments; deep embroidered key pattern borders in shoulder. In various rich and subdued colors, exceedingly attractive and greatly esteemed by Chinese. Length, 43 inches.

415 Silk Brocade Table Cover (Chien Lung)

Soft, light yellow ground; pattern of rows of chrysanthemum flowers and foliage in various brilliant colors, mingled with gold threads stitched down.

Length, 93 inches; width, 55 inches.

416 Embroidered Carpet Table Cover

Peking carpet, short, soft, silky pile, brilliant red ground, beautifully embroidered with season flowers and various kinds of flying birds; different colors are used in the decoration. Length, 100 inches; width, 79 inches.

Third Afternoon

417 Silk Embroidered Hall Curtain

Crimson silk ground, embroidered with thick floss silk in various brilliant colors, silvery white and gold. Elaborate embroidery represents the Eight Fairies Crossing the Sea, each of them holding various instruments. In soft and harmonious colors. An attractive and uncommon pattern. Time has given a mellow tone to this important piece. Length, 176 inches; height, 46 inches.

418 Imperial Embroidered Lace Work Table Cover (Chien Lung)

White lace ground, embroidered with thick floss silk in five brilliant colors. Richest yellow field; oval medallion of mowtan flowers and floral forms, two mowtan flowers at side. Lined border with lizard mottif band.

Length, 66 inches; width, 37½ inches.

419 Velvet Table Cover

Thick ground of velvet; shot color of light to deep golden yellow. Pattern of chrysanthemum flowers, foliated scrolls and leaves in silk brocade; bright, soft vegetable colors.

Size, 40 inches square.

420 Set of Four Imperial Gold Kus-su Hangings (Chien Lung)

This fabric, called Kos-su, is rare and much valued by the Chinese; consists of gold thread ground with specially and separately woven silk brocade cut into the various shapes to suit the pattern, and then interwoven with the gold thread ground, giving an edge effect which is of great charm. The decoration consists of figures and palaces; with touches of bright colors. and delicately painted shades.

Length, 42 inches; width, 11 inches.



No. 582

421 Pair of Imperial Gold Kus-su Hangings (Chien Lung)

The piecing or inlay of the various ornaments in the diaper ground is done by interweaving the different brocade shapes, separately woven, into the main fabric, giving a delicate effect to the outline of the decoration, and known by the Chinese as Kos-su. Subject of the decoration comprises a history of the Three Kingdoms, showing the figures and houses in different types.

Length, 40 inches; width, 10½ inches.

422 Rare Queen Consort's Silk Embroidered Robe (Chien Lung)

Rich pink ground, and worked with satin stitch in floss silk in brilliant, harmonious and varied colors, also laid, stitched down gold thread. Lower border is worked with a deep line of waves of rainbow effect, with crested summits and floating symbols, beating against hills. Large Imperial five-clawed dragons occupy centres of front and back. Dragons of smaller sizes are on neck, shoulders, sleeves and other parts. This robe was only worn by the Queen Consort.

Length, 36 inches.

423 Imperial Silk Kus-su Robe (Chien Lung)

Dark blue silk brocade ground, entirely woven with extraordinary wealth of design and mingled with rich and beautiful colors, and gold lace-like work for dragon bodies. The piecing or inlay of the various ornaments on the diaper ground is done by interweaving the different brocade shapes into the main fabric, giving a delicate effect to the outline of decoration and known by the Chinese as Kus-su. Full-faced five-clawed dragons occupy the centre of front and back with two others gazing upwards. Woven with extraordinary skill.

Length, 53 inches.

Third Afternoon

**424 Imperial Embroidered Lace Work Table Cover
(Chien Lung)**

White lace ground, embroidered with thick floss silk in five brilliant colors, rich yellow key pattern field, central medallion of three peaches, with similar designed corners filled in with various designs in different colors. Conventional crested wave pattern at border.

Size, 47 inches square.

**425 Rare Imperial Embroidered Lace Work Table Cover
(Chien Lung)**

White lace ground, embroidered with thick floss silk in five brilliant colors. Embroidered yellow ground of key pattern, with wide border and lines, inner borders of blossoms and arabesque leaves in various colors. Central square contains a medallion and angles of floral design, ten flower baskets filled at each side. Different colors are used in the decoration. Time has given a mellow tone to this important piece.

Length, 66 inches; width, 37½ inches.

426 Large Velvet Table Cover (Chien Lung)

Thick dark blue ground of velvet; pattern of chrysanthemum flowers, foliated scrolls and leaves in silk brocade; bright, rich dark blue colors, and wide floral borders in velvet.

Length, 79½ inches; width, 48½ inches.

427 Silk Brocade Robe (Chien Lung)

Rich blue silk ground, and worked with satin stitch in gold thread in brilliant and harmonious colors. Lower border is worked with a deep line of waves in rainbow effect, with crested summits and floating symbols, beating against hills. A band of scrolled clouds covers part of the waves, and the same cloud shapes are spread over the rest of the robe. Large Imperial dragons occupy the centre of front and back, with two others gazing upwards and pursuing the sacred orb. A smaller full-faced dragon on shoulders, neck, sleeves and other parts.

Length, 50 inches.

428 Silk Brocade Table Cover (Chien Lung)

Imperial yellow ground. Pattern of conventional flower forms, peach trees and flying bats. The flowers and leaves are woven in shades of various soft colors with considerable detail, and giving an unusual and rich embroidery effect.

Length, 49 inches; width, 34 inches.

[*See Illustration*]

429 Imperial Silk Brocade Robe (Chien Lung)

Rich cherry color ground, and worked with satin stitch in floss silk in brilliant, harmonious and varied colors, also laid, stitched down gold thread. Lower border is worked with a deep line of waves of rainbow effect. A band of scrolled clouds covers part of the waves. Large Imperial five-clawed dragons occupy centre of front and back. Mingled with the clouds are flying bats, Happiness, and Shou character Longevity and other symbols. Dragons of smaller sizes are on neck, shoulders, sleeves and other parts. The variety of coloring, exquisite needlework and beauty of design make the robe the perfection of embroidery.

Length, 53 inches.

430 Thick Coarse Silk Woven Robe (Chien Lung)

Thick, rich blue ground, and worked with satin stitch in floss silk in brilliant, harmonious and varied colors, also laid, stitched down gold thread. Lower border is worked with gold threads of waves in rainbow effect, with crested summits and floating symbols, beating against hills. A varied coloring of cloud shapes is spread over the rest of the robe. Large Imperial five-clawed dragons occupy the centre of front and back. Mingled with the clouds are flying bats, Happiness, Shou character Longevity and other symbols. Dragons of smaller sizes are on neck, shoulders, sleeves and other parts. The variety of coloring, exquisite needlework and beauty of design make this robe the perfection of excellence. Length, 52½ inches.

431 Imperial Silk Embroidered Robe (Chien Lung)

Rich palm red ground, and worked with satin stitch in floss silk in brilliant, harmonious colors and gold thread. Lower border is worked with a deep line of waves in rainbow effect. A band of scrolled clouds covers part of the waves, and cloud shapes are spread over the rest of the robe. Large Imperial five-clawed dragons occupy centre of front and back. Dragons of smaller sizes are on neck, shoulders, sleeves and other parts. The variety of coloring, exquisite needlework and beauty of design make this robe the perfection of embroidery. Especially to be noticed is the short effect given to the cloud scrolls by the use of green and blue colors. Length, 54½ inches.

432 Rare Imperial Kus-su Robe (Chien Lung)

Light blue silk brocade ground, entirely woven with extraordinary wealth of design and mingling of brilliant and beautiful colors, and gold, lace work for dragon bodies. The piecing or inlay of the various ornaments in the diaper ground is done by interweaving the different brocade shapes, separately woven, into the main fabric, giving a delicate effect to the outline of the decoration, and is known by the Chinese as Kus-su. Full-faced five-clawed dragons occupy the centre of back and front, with two others gazing upwards. A smaller full-faced dragon is on each shoulder. Cloud scrolls of bats, Happiness, and Shou character of Longevity with other symbols are scattered between the dragons and above the elaborate border and base of robe, which consists of the conventional line of waves, with crested summits and floating symbols, beating against hills. A band of scrolled clouds covers portions of the waves. The variety of coloring and the extraordinary skill and precision of forming the various parts, yet making one continuous and homogeneous fabric, combine to make this rare art exceedingly attractive, and it is greatly esteemed by the Chinese. These robes are only worn by Emperors. Length, 54 inches.

433 Bold Thread Embroidered Robe (Chien Lung)

Rich dark blue ground. Lower border is worked with a deep line of waves of rainbow effect, with crested summits and floating symbols beating against hills. A band of scrolled clouds covers part of the waves, and the same cloud shapes are spread over the rest of the robe. Large Imperial full-faced five-clawed dragons occupy centres of front and back. Mingled with the clouds are flying bats, Happiness, and Shou character Longevity, and other symbols. Dragons of smaller sizes are on neck, shoulders, sleeves and other parts. All of which are stitched down in brilliant and harmonious colors of silver and gold threads. Time has given a mellow tone to this important piece.

Length, 55½ inches.

434 Extraordinary Suit Old Armor and Helmet (Ming)

The helmet is believed to be one of the largest known, and is rarely obtained in complete condition. Crimson silk ground, curiously ornamented with brass buttons over the whole body. The workmanship and material are of an unusually fine quality.

435 Fancy Porcelain Wall Fire Screen (Chien Lung)

In eight leaves or panels, and when opened forms a complete picture. Each panel represents ancient history; with figures, palaces and Eight Fairies. All in brilliant enamel colors of famille rose, and mingled with blue and white floral design panels in the middle and lower borders.

Height, 32 inches; width, 6½ inches.

436 Favorite Five Color Pen Holder (Kang Hsi)

Hard, white paste, beautifully decorated with blossoming season flowers. Rare painting, and glazed in rich and brilliant five colors.

Height, 4 inches; diameter, 5 inches.

Third Afternoon

437 Pair of Fancy Bowls (Kang Hsi)

Sonorous, white, porcelanous ware, boldly glazed, yellow ground. Painted with two four-clawed dragons rising from the sea and pursuing the pearl of omnipotence, artistically pencilled in underglaze of five colors in a life-like manner. Underneath is impressed a seal mark.

Height, 3 inches; diameter, $6\frac{1}{4}$ inches.

438 Rare Pen Holder (Kang Hsi)

Pea green ground, of graceful form. Delicately painted flower blossoms with peach bloom tints, mingled, with branches issuing from the rocks.

Height, $5\frac{3}{4}$ inches; diameter, $4\frac{3}{4}$ inches.

439 Five Color Plate (Kang Hsi)

Sonorous, white, porcelanous ware. Beautifully embellished with sprays of mei trees and bamboo in natural colors. A wide border of various colors, enhanced by a reserve decoration of fruits. Diameter, $8\frac{1}{4}$ inches.

440 Five Color Pen Holder (Kang Hsi)

Hard, sonorous, white, porcelanous ware. Decoration of a fairy riding on a dragon's head and crossing a terrible, raging sea in rich five-color glaze. Very interesting painting. Height, $5\frac{1}{2}$ inches; diameter, $4\frac{1}{4}$ inches.

441 Fancy Decorated Plate (Kang Hsi)

Of sonorous, hard paste, and invested with rich and brilliant five colors, over which is an artistically painted embellishment executed in brilliant enamel colors with lizards and plum blossoms. Diameter, $7\frac{3}{4}$ inches.

442 Decorated Five Color Bowl (Kang Hsi)

Deep body, broad foot and expanding mouth. Sonorous, thin porcelain, exquisitely pencilled with blossoms of season flowers and rocks; overhead are flying butterflies. Beautifully painted in brilliant enamel of the Kang Hsi five colors. A fine example. Underneath bears a mark of the period. Height, 4 inches; diameter, 8 inches.

443 Large White Porcelain Deep Plate (Chien Lung)

Sonorous, hard paste, with conventional decoration of lotus flowers and leaf scrolls. A rare specimen of its kind.

Diameter, 13½ inches.

444 Rare and Important Porcelain Tripod (Ch'ai Ching)

Oviform body, three low feet, low neck, expanding mouth, and with two tubular handles on both sides. Hard, heavy porcelain, body beautifully decorated in Pu Ku style or Eight Antiques in brilliant enamel colors of famille rose.

Height, 11¼ inches; diameter, 10½ inches.

445 Set of Delicate Enamel Fruit Saucers (Chien Lung)

Peking enamel on copper. Complete in nine pieces. The middle one is of large size, beautifully painted with scenes depicting figures, palace and court scenes. The embellishment of the eight small saucers pencilled with numerous flying bats and tiny fancy designs. All executed in enamel colors of famille verte. Diameter, 17 inches.

446 Sang de Boeuf Bottle (Yung Ching)

Globular body, broad foot, long neck and spreading mouth. The whole body covered in rich and brilliant Sang de Boeuf glaze, faintly crackled.

Height, 12¼ inches; diameter, 7½ inches.

Third Afternoon

447 Soft Paste Plate (Yung Ching)

Soft paste, which is, however, a dense, porcelanous ware, only slightly softer than the ordinary porcelain of the period. Body coated with a creamy white glaze and faintly crackled, the whole ground filled with chrysanthemum flowers and arabesque leaves. Diameter, $10\frac{3}{4}$ inches.

448 Pair of Exceptional Decorated Large Plates (Chien Lung)

Of graceful shape and finished technique; thin, sonorous porcelain, and exquisitely decorated in beautiful enamel colors of famille rose, with scenes depicting a fairy tale, T'ung Fang Sun fairy going to the mountains to gather medicine plants. This plate represents an old fairy named T'ung Fang Sui holding a fairy plant in his hands; at his back follows a group of attendants. In front a deer carries the medicine plants on its back. The scenery showing the river and tree view is artistically executed. Very rare pair and highly prized by Chinese connoisseurs. Obtained from the palace at Peking.

Diameter, $13\frac{1}{4}$ inches each.

[See Illustration]

449 Flambé Vase (Chien Lung)

Flattened, ovoid body, long neck. Pea green ground, flambé glaze. With lizard ornamentation. Graceful in form and rare specimen.

Height, $12\frac{1}{4}$ inches; diameter, $9\frac{1}{2}$ inches.

450 Pair of Fancy Artificial Jade Flower Groups (Chien Lung)

The embellishment consists of mei tree blossoms beautifully made up with various kinds of best quality jades and in different colors in a natural manner. Very attractive pieces, and rare. Worthy the attention of museums and collectors.

Height, 15 inches.



No. 586

FOURTH DAY'S SALE
SATURDAY, FEBRUARY 3rd, 1917

At 2.30 o'clock P. M.

451 Three Pate Blue High Footed Plates (Yung Ching)

Shallow body, high and expanding base. Hard, heavy, porcelaneous ware, coated in rich, brilliant pale blue glaze and even coloring. Underbase bears a mark of the period.

Height, $3\frac{1}{2}$ inches; diameter, $6\frac{3}{4}$ inches.

452 Fancy Rabbit (Chien Lung)

Hard, white, porcelaneous ware. The statuette represents a rabbit seated, ears upwards, reddish eyes, and with frightened expression. Coated with blackish and white glaze.

Height, $7\frac{1}{2}$ inches.

453 Lu Chuan Yao Vase (Chien Lung)

In the shape of a gourd; a graceful and attractive piece. Hard clay, of turquoise color ground on white body, the glaze carried in the interior of neck and underneath. Very rare specimen. Height, $6\frac{1}{2}$ inches; diameter, $3\frac{1}{2}$ inches.

454 Pair of Jardinieres (Chien Lung)

Long, square shape, shallow body, low feet and foliage pattern at sides. Hard, thin porcelain, and beautifully decorated with chrysanthemum flowers and arabesque leaves in brilliant enamel colors of famille rose; gold designs all over the edges.

Height, 2 inches; width, $7\frac{1}{2}$ inches.

Fourth Afternoon

455 Fancy Flambé Bottle (Chien Lung)

Graceful shape, globular, flattened body, slightly tapering neck, broad foot and spreading mouth. Dense, heavy porcelain, coated with a transmutation glaze of rich reddish purple hue, splashed in waterfall drippings with bluish grays. Height, 4 inches; diameter, $2\frac{3}{4}$ inches.

456 Porcelain Tripod (Chien Lung)

Graceful form, in an ancient bronze vessel shape. Of sonorous, thin porcelain, the whole body covered in brilliant and richest light blue glaze. Highly prized by Chinese connoisseurs and collectors.

Height, 4 inches; width, $3\frac{3}{4}$ inches.

457 Beautiful Enamel Tray (Chien Lung)

Canton enamel on copper. In a curious shape, green ground, exquisitely pencilled blossoms of mowtan flowers and butterflies flying in the sky. In brilliant enamel colors of famille rose. Width, $8\frac{1}{2}$ inches.

458 White Porcelain Vase (Yung Ching)

Hard, heavy, white porcelain. Graceful form, coated in a single color and beautifully decorated with basket forms.

Height, $4\frac{1}{4}$ inches; diameter, $3\frac{3}{4}$ inches.

459 Pair Famille Rose Flower Pots (Chien Lung)

Graceful quadrilateral shape, deep body. Hard, heavy, dense porcelainous ware. Exquisitely pencilled figures, houses and various kinds of farmers working, reeling silk and taking care of silk worms, etc. All in brilliant enamel colors of famille rose.

Height, 9 inches; 10 inches square.

460 Large Bowl (Kang Hsi)

Sonorous, hard paste, the whole body is coated with rich brilliant pea green glaze. Beautifully decorated with lotus leaf design. Underneath bears a seal mark.

Height, 4 inches; diameter, 8 inches.

461 Fancy Teapot (Kang Hsi)

Ovoid, short body, graceful handle and slender spout, with dome cover, body boldly decorated with sparrows resting under the shade of willow trees, perched on bamboo stalks; overhead a flying sparrow; cover and body glazed in richest pale blue color.

Height, $3\frac{3}{4}$ inches; diameter, $2\frac{1}{2}$ inches.

462 Decorated Bottle (Yung Ching)

Pure white ground, decorated with blossoms of lotus flowers and flying butterflies; rich and brilliant famille rose glaze, and the best specimen of its class.

Height, 6 inches; diameter, $3\frac{1}{2}$ inches.

463 Decorated Tall Vase (Chien Lung)

Club shape. Hard, sonorous porcelain. Beautifully decorated with a group of figures holding different instruments in bold and expressive execution. Painted in brilliant enamel colors of famille rose.

Height, 25 inches; diameter, $10\frac{1}{2}$ inches.

464 Imperial Flower Pot (Chien Lung)

Long, square shape, deep body and expanding mouth. Sonorous, hard, porcelaneous ware. Rich and brilliant yellowish ground, beautifully decorated with six bold five-clawed dragons, rising from the sea amid cloud forms, in pursuit of the sacred pearl. All executed in brilliant enamel color of green glaze.

Height, $6\frac{1}{4}$ inches; width, $13\frac{1}{4}$ inches.

Fourth Afternoon

465 Rare and Important Vase

Raised, porcelanous ware. The whole body in a brilliant yellow color. Three goats playing under the shade of trees; at their back are hills and running streams. An attractive piece.

Height, $6\frac{1}{2}$ inches; diameter, $6\frac{1}{4}$ inches.

466 Pair of Light Yellow Writer's Water Bowls (Kang Hsi)

Graceful form. Hard, white porcelain, covered with a brilliant, even tone glaze of light yellow color; the glaze carried underneath. Body beautifully decorated with bold dragons. Very rare pair.

Height, $3\frac{1}{4}$ inches; diameter, 5 inches.

467 Gourd Shaped Bottle (Chien Lung)

Hard, white, porcelanous ware. In the form of a graceful gourd, the whole body coated with a very beautiful, thin, translucent, peacock blue glaze.

Height, $12\frac{1}{2}$ inches; diameter, $6\frac{1}{4}$ inches.

468 Two Canton Enamel Tea Trays (Chien Lung)

Delicate, long, quadrilateral shape. Richly embellished with an interesting landscape and figures in soft famille rose coloring.

Height, $7\frac{3}{4}$ inches; width, $11\frac{1}{2}$ inches.

469 Sitting Figure of God of Happiness (Chien Lung)

The seated figure has a wonderful facial expression, and dressed in coral red garments; right knee raised, and bare foot protruding from under his garment; also bare broad breast; one hand is resting on the raised knee.

Height, $5\frac{3}{4}$ inches.

470 Porcelain Swimming Duck (Chien Lung)

Hard, white, porcelanous ware. Strongly modelled swimming duck, with its head erect and bill outstretched, the crouching, webbed feet under its breast as if floating on the surface of the water. The whole body is coated with a beautiful translucent, celadon glaze.

Width, $6\frac{1}{2}$ inches.

471 Two Roosters (Kang Hsi)

Cleverly modelled and very unusual in size, standing on a rock; hard, sonorous porcelain, covered with a thick, brilliant yellow, green and white glaze. Rare specimen.

Height, 8 inches.

472 Five Colored Plate (Ming)

Hard, heavy, sonorous paste. Beautifully decorated with a scholar and lady standing in the shade of a tree. Five-color glaze.

Diameter, 8 inches.

473 Delicate Famille Rose Jar (Yung Ching)

Graceful oviform body, low neck and broad foot. Hard, heavy, sonorous, porcelanous ware. In rich pea green ground, and exquisitely pencilled with flowers in natural colors. In brilliant enamel colors of famille rose; has fancy bands on the neck and base.

Height, 7 inches; diameter, $4\frac{3}{4}$ inches.

474 Unique Celadon Luanchuan Yao Lamp (Sung)

Shape of the ancient oil lamp, complete with two parts, the upper part in open work; in the centre of the base there is a small well for holding the oil; covered with a celadon glaze. Height, 3 inches; diameter, $4\frac{1}{2}$ inches.

Fourth Afternoon

475 Kao Yao Vase (Ming)

An unusual shape. Hard, heavy paste, the whole body coated in richest cream buff glaze and with café au lait crackle; the glaze is carried in interior of neck.

Height, 7 inches; diameter, $6\frac{1}{4}$ inches.

476 Celadon Dish (Ming)

Flattened and rimmed edge, stone porcelain body, with inner border fluted; coated with a thick, greenish celadon glaze.

Diameter, 15 inches.

477 Celadon Incense Burner (Sung)

Finely modelled, with three low feet and short neck, richly coated with an even glaze of grayish green. Fine crackle. Has carved cover and stand.

Height, 4 inches; diameter, $4\frac{1}{2}$ inches.

478 Ting Yao Bottle (Ming)

Flattened, oviform body, broad foot and slightly short neck. Hard, porcelaneous ware, with a very fine crackle in irregular forms, covered with a particularly brilliant cream white glaze. Beautifully decorated with two bold four-clawed dragons, rising from the sea amid cloud forms and fire emblems, in pursuit of the sacred pearl.

Height, $8\frac{1}{2}$ inches; width, $6\frac{1}{4}$ inches.

479 Fancy Pen Holder (Kang Hsi)

Deep, round body, broad foot and spreading mouth. Sonorous, hard paste, beautifully decorated with blossoming flowers, the roots growing among rocks; overhead are flying butterflies, pencilled in light yellow and peach bloom tints.

Height, $5\frac{1}{4}$ inches; diameter, 4 inches.

480 Five Color Pen Holder (Kang Hsi)

Hard, white porcelain, glazed in rich and brilliant five colors, artistically painted in lifelike manner, bold four-clawed dragon rising from a terrible raging sea, and in pursuit of the pearl of omnipotence.

Height, $4\frac{3}{4}$ inches; diameter, $3\frac{3}{4}$ inches.

481 Five Color Pen Holder (Kang Hsi)

White ground, beautiful figure decoration.

Height, 5 inches; diameter, 4 inches.

482 Exceptional Pair of Wine Cups (Kang Hsi)

Slightly deep body and spreading mouth. Sonorous, thin, white paste of almost eggshell thinness. Artistically decorated with blossoming flowers, roots growing among rocks, the spreading branches filling the intervening spaces, exquisitely executed in rich and brilliant five colors. Underneath the foot bears six characters within the double blue ring of the period.

Height, 2 inches; diameter, $2\frac{1}{2}$ inches.

483 Fukien Porcelain Wine Cup

Sonorous, thin paste, body beautifully decorated with two bold four-clawed dragons in pursuit of the sacred pearl; coated in pure white glaze.

Height, $1\frac{1}{2}$ inches; diameter, $3\frac{1}{4}$ inches.

484 Five Color Pen Holder (Kang Hsi)

Sonorous, hard paste, with figure decoration. In rich and brilliant five-color glaze.

Height, 5 inches; diameter, 4 inches.

485 Five Color Pen Holder (Kang Hsi)

Hard, fine, porcelaneous ware, decoration of blossoming mowtan flowers and flying birds. Brilliant five-color glaze.

Height, $5\frac{3}{4}$ inches; diameter, $4\frac{3}{4}$ inches.

Fourth Afternoon

486 Pair of Ting Yao Plates (Sung)

Graceful shallow form. Slightly hardened porcelanous ware, approaching soft paste. The panels are beautifully decorated with floral designs, and coated in a rich, warm, creamy buff glaze. Diameter, $7\frac{1}{4}$ inches each.

487 Pair of Ting Yao Plates (Sung)

Graceful shallow body and expanding mouth. Slightly hardened porcelanous ware, approaching soft paste. These plates are beautifully decorated with floral design and coated in a rich, warm, creamy buff glaze.

Diameter, $7\frac{1}{4}$ inches each.

488 Unique T'u Ting Yao Vase (Sung)

Hard, porcelanous, almost softness. Flattened, oviform body, high base, low neck and two loose ring handles. Body with a curious decoration of two dragons on both sides and slightly crackled. Rich cream white color.

Height, $8\frac{1}{4}$ inches; width, $7\frac{1}{4}$ inches.

489 Celadon Tripod (Ming)

The incense burner is coated with a rich gray blue celadon glaze. Height, 4 inches; diameter, $5\frac{1}{2}$ inches.

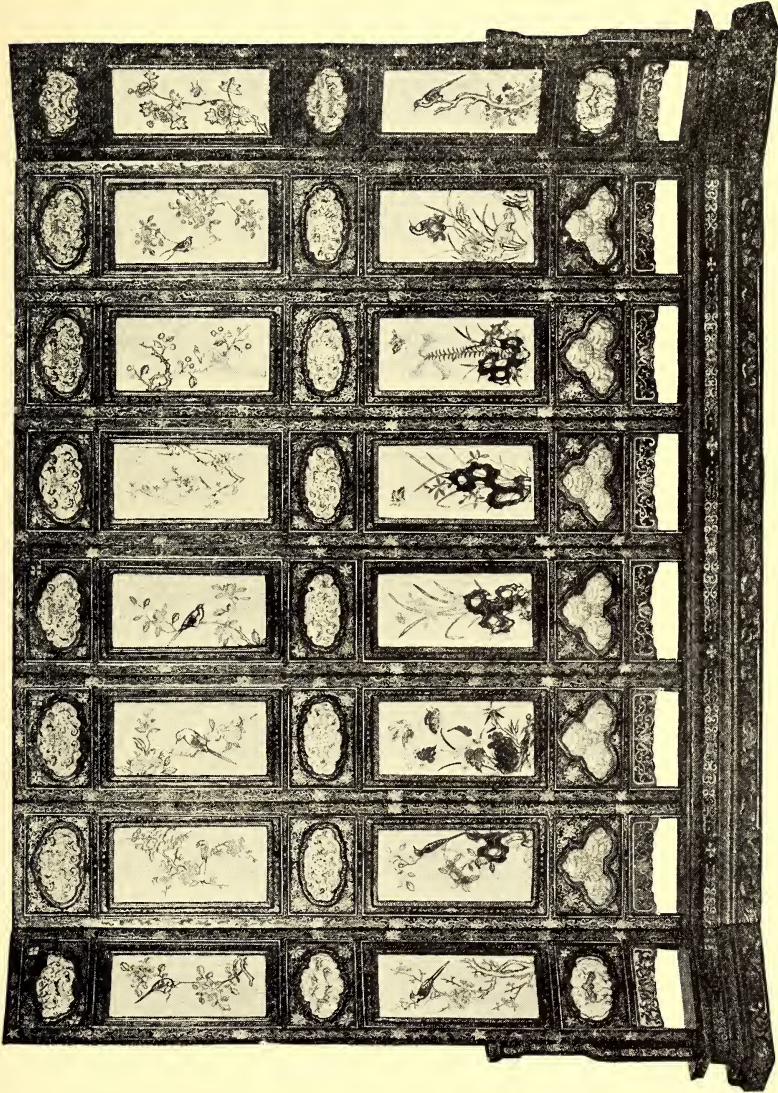
490 Large Decorated Plate (Yung Ching)

Graceful form. Hard, heavy, sonorous, porcelanous ware, beautifully pencilled with blossoming mowtan flowers, a lark perched thereon. In brilliant enamel colors of famille rose. Diameter, $13\frac{3}{4}$ inches.

[*See Illustration*]

491 Sang de Boeuf Bowl (Ming)

Deep body, broad foot and open mouth; with café au lait crackle. Height, $3\frac{3}{4}$ inches; diameter, 8 inches.



No. 588

492 Ancient Sacrificial Vessel (Sung)

Hard stoneware. Modelled in an ancient shape, graceful ovoidal body, with a quadrilateral handle, short expanding neck, with three low feet. This unique and complete piece has its original conical top. The whole body boldly undecorated. Height, $7\frac{1}{4}$ inches.

493 Sang de Boeuf Bottle (Kang Hsi)

Full globular body, slightly high neck, expanding mouth and broad foot. Hard, thin, sonorous, porcelanous. Richly coated with a brilliant Sang de Boeuf glaze and fine café au lait crackle. The base is unglazed. A fine and delicate example.

Height, 9 inches; diameter, $4\frac{1}{2}$ inches.

494 Flambé Vase (Chien Lung)

Hard, sonorous paste. Graceful oviform body, broad, high shoulder and low neck, with slightly expanding base. The whole body coated with a beautiful haricot red glaze, in which small flambés of purplish tints appear.

Height, 15 inches; diameter, $7\frac{1}{2}$ inches.

495 Pottery Statuette (Ming)

Strongly molded, a seated figure of Kwan Fu Tsze, with a very elaborate mantle, covered with a brilliant translucent glaze of Ming three colors. Height, $14\frac{1}{2}$ inches.

496 Porcelain Buddha (Ming)

Finely modelled, a figure of Sen Ti Buddha is seated on a shrine in high relief, with graceful folds in drapery, garments and shrine are coated with a thick, brilliant glaze of Ming three colors. Height, $9\frac{3}{4}$ inches.

Fourth Afternoon

497 Buddhist Funeral Vase (Sung)

Modelled in strong relief, with a round bulbous mouth; the body and neck are beautifully decorated with a Buddhist and dragon. The celadon glaze is of grayish green color and finely crackled. Really a unique and rare piece

Height, $14\frac{1}{4}$ inches; diameter, 6 inches.

498 Exceptional Buddhist Funeral Vase (Wei)

Hard stoneware in natural glaze; modelled in high relief with charming Buddhist figure, dragon and clouds. Rare unique piece. Height, $12\frac{1}{4}$ inches; diameter, $3\frac{3}{4}$ inches.

499 Pate Blue Baluster Form Vase (Chien Lung)

Graceful ovoid body, with gently receding curves to base and short, thick neck with expanding mouth. Pure white, sonorous porcelain, with a brilliant pale blue glaze of even color, and café au lait crackle in irregular forms.

Height, $17\frac{1}{4}$ inches; diameter, 8 inches.

500 Light Yellow Jar (Chien Lung)

Of graceful oviform; thin, sonorous porcelain, and beautifully embellished with sprays of peonies and chrysanthemum flowers, exquisitely painted in light yellowish glaze of very even quality.

Height, $12\frac{1}{4}$ inches; diameter, $9\frac{3}{4}$ inches.

501 Fancy Plate (Yung Ching)

Pure white, thin glaze, of exceedingly fine quality, artistically painted, representing three kinds of fruit, and glazed in rich and brilliant famille rose. Bears a seal mark.

Diameter, $6\frac{1}{4}$ inches.

502 Unique Porcelain Vase (Sung)

Oviform, steep shoulder and short, upright lip with tiny mouth and relatively narrow feet, and four carved rings on the neck. Brilliant glaze of soft, creamy white with delicate crackle, decorated in a rich brown, bold, floral design. Height, $14\frac{1}{2}$ inches; diameter, 6 inches.

503 Porcelain Figure (Ming)

Hard, heavy paste. The figure is standing and holding a flower vase, and wearing a five-colored garment.

Height, $7\frac{1}{4}$ inches.

504 Flambé Bottle Shaped Vase (Chien Lung)

Ovoidal body; graceful neck, slightly expanding toward the mouth. Dense, hard paste, coated with a beautiful haricot red glaze in which small flambés of purplish tints appear. Height, $15\frac{1}{2}$ inches; diameter, 7 inches.

505 Fancy Yellow Bottle (Chien Lung)

Globular body, broad foot and short neck. Hard, sonorous paste, the whole body coated in a brilliant orange yellow glaze and minutely crackled.

Height, $6\frac{1}{2}$ inches; diameter, $2\frac{3}{4}$ inches.

506 Pair of Delicate Wall Vases (Ming)

Hard, heavy stoneware, slightly baked in brown and glazed. In a graceful shape of ancient tripod form. A wonderful and rare pair. Height, 15 inches.

507 Remarkable Vase (Chien Lung)

Graceful oviform body; long, slender neck, and expanding mouth. A dragon coils around the neck. The whole body is covered with rich and brilliant three colors in an irregular form. Height, 5 inches; diameter, $3\frac{1}{4}$ inches.

Fourth Afternoon

508 Peacock Blue Jar (Chien Lung)

Ovoid, with short neck and large mouth, with lightly molded lip and broad foot. The whole body coated with a rich, light peacock blue glaze.

Height, 8 inches; diameter, 6½ inches.

509 Extraordinary Large Jar (Sung)

Oviform, with steep shoulder and short, upright lip, with large mouth and relatively narrow foot. Brilliant glaze of soft creamy white, with a delicate crackle. These qualities are rare; and it is interesting that nothing happened to it for these six hundred and thirty-seven years. Has a heavy five-legged teakwood stand.

Height, 17 inches; diameter, 15 inches.

510 Earthenware Vase with Double Ears (Han)

This earthenware vase was made in the Han Dynasty and in the most ancient style. Very hard substance, covered with a rich translucent brilliance of ancient black hue.

Height, 13¼ inches; diameter, 8 inches.

511 Remarkable Pottery Vase (Sung)

Graceful bottle-shaped vase. Hard, strong pottery, wonderfully decorated with floral designs in a brilliant ancient black color, and the greenish glaze is still visible.

Height, 8½ inches; diameter, 4 inches.

512 Creamy White Jar (Yuen)

Long, oviform body; short, broad shoulder, wide base and open mouth; hard, heavy paste. The whole coated with a rich and brilliant creamy white glaze and finely crackled.

Height, 8½ inches; diameter, 7 inches.

513 Pottery Animal (Tang)

Skillfully modelled, an animal is sitting on an oblong pedestal; erect head and feathering tail pointing upward; a fierce, terrible expression on its face; coated in an ancient black hue of a brilliant glaze.

Height, $6\frac{1}{2}$ inches; width, $8\frac{1}{2}$ inches.

514 Pottery Animal (Tang)

This Tang pottery figure of a seated animal is wonderfully life-like. The substance is thick and strong; coated with a beautiful color and without glaze.

Length, $8\frac{1}{2}$ inches; width, $4\frac{1}{2}$ inches.

515 Porcelain Statuette (Sung)

The Buddha with a noble countenance is seated on a shrine, wearing a warm, creamy white, yellow and blackish robe and black head-dress, one hand is resting on a knee, while the other is holding a tablet.

Height, 9 inches.

516 Exceptional Pottery Vase (Sung)

Hard, heavy pottery, in six-side shape, broad shoulder and high, slight neck; traces of coloring still visible.

Height, $10\frac{1}{4}$ inches; diameter, 6 inches.

517 Ancient Vase (Sung)

Hard, heavy paste, in a curious ancient style, and its warm, creamy white glaze in some places proves well its antiquity. Height, $16\frac{1}{2}$ inches; diameter, $3\frac{1}{2}$ inches.

Fourth Afternoon

518 Exceptional Garden Seat (Sung)

Hard, heavy, porcelanous. In the form of a drum, and beautifully decorated with ancient figures and animals; coated a rich and brilliant black glaze.

Height, 12½ inches; diameter, 10 inches.

519 Ancient Vase (Sung)

Hard stoneware; ovoid, long body, with short neck and slender, expanding mouth. Elaborately decorated with black floral designs. Such treasures are seldom found!

Height, 11 inches.

520 Pottery Vase (Han)

Flattened, oviform body; long, high neck and expanding mouth. Hard, heavy stoneware; the body is partly glazed with a rich ancient black hue.

Height, 13 inches; diameter, 8 inches.

521 Famille Rose Flower Pot (Chien Lung)

Eight-side shape, the mouth slightly extended by a deep flange lip. Hard paste of musical tone. On each of the sides are exquisitely beautiful decorations of a group of faries, representing different styles, manners and various kinds of clothing. Height, 9 inches; width, 15 inches.

522 Beautiful Wall Vase (Chien Lung)

Graceful bottle-shaped, with two carved open handles on both sides; body and neck are panelled, representing temples, figures, landscapes, trees and flowers; coated with a rich famille rose glaze.

Height, 7¼ inches; width, 3½ inches.

523 Ancient Spoon (Han)

Hard, heavy pottery, in the form of an oviform body, with short dragon head's handle; traces of the coloring still to be seen. Said to have been buried in the ground and found after one thousand years. A real treasure and very interesting. Height, $2\frac{1}{4}$ inches; diameter, 6 inches.

524 Ancient Curious Spoon (Han)

Hard stoneware, in an ancient style of quadrilateral form, and on the neck a short handle. Such a vessel is seldom found in the world of arts, and still more seldom in perfect condition. Height, $2\frac{1}{4}$ inches; width, 4 inches.

525 Ancient Celadon Jug (Sung)

In a curious shape of an ovoid body, short neck, high lip; lip centre with a short spout, the other side is modelled with a loose handle. Light fine porcelain, glazed in thick, brilliant creamy white coloring and fine crackle. It was said to be excavated from the earth.

Height, $6\frac{1}{2}$ inches; diameter, $4\frac{1}{2}$ inches.

526 Rare Pair of Celadon Vases (Sung)

Four-sided shape, slightly sloping shoulder, with expanding mouth. Glazed in rich and brilliant greenish celadon colors. Height, with stand, 8 inches; width, $2\frac{1}{2}$ inches.

527 Jade Table Screen (Chien Lung)

Fancy circular shape and exquisitely carved, a fairy riding a horse among clouds; by her side is an attendant. All finely done; the color is greenish white, softly polished,

Height, with stand, $4\frac{1}{2}$ inches.

Fourth Afternoon

528 Jade Table Screen (Chien Lung)

Delicate circular shape, greenish white jade; both sides are beautifully carved with animals, clouds, moon, sun and other symbols. Has a carved teakwood stand.

Height, with stand, $4\frac{1}{4}$ inches; width, $2\frac{1}{4}$ inches.

529 Jade Ornament (Han)

In the form of an axe, and beautifully carved in an ancient bronze design. The color is yellowish, like old ivory, and with mottles that take a dark brown shade of blood stain. This ornament was made in the Han Dynasty for decorating the girdle, and hung just below the wearer's waist.

Width, 4 inches; thickness, $\frac{1}{2}$ inch.

530 Jade Libation Cup (Han)

Ovoid body; in the form of a bronze vessel, two dragon head handles, and decorated with one hundred carved marmel points, symbols of numerous posterity. Fine grayish white and brown tints.

Height, with stand, $3\frac{1}{4}$ inches; width, 4 inches.

531 Jade Dragon (Chow)

This jade dragon, known as the Chou Lung, was excavated at Anki, in Cheching Province of South China. The vessel was used in offering sacrifices to the gods, to pray for rain.

Diameter, 4 inches; thickness, $\frac{1}{2}$ inch.

532 Old Jade Ornament (Han)

Graceful, round shape, gray and blackish jade, with a broad hole in the centre; skillfully carved in high relief, with numerous spottings on the surface. Brilliantly polished.

Diameter, $2\frac{1}{2}$ inches.



No. 590

533 Delicate Jade Table Screen (Ming)

Round shape, brownish and black clouded jade. Artistically carved in high relief, showing a figure seated on a rock under the shade of a tree, behind which are hills. Brilliantly polished. Diameter, $5\frac{1}{2}$ inches.

534 Large Green Jade Paper Weight

Graceful, long quadrilateral shape, beautifully decorated with bronze vessel designs on the surface. Brilliantly polished, and skillfully carved in high relief.

Length, 12 inches.

535 White Jade Ju-i

A delicate ornament called ju-i by the Chinese. Of pure white jade, and beautifully decorated in an ancient bronze vessel design. Length, $21\frac{1}{2}$ inches.

536 Delicate Fei-tsu Jade Table Screen (Chien Lung)

Graceful square shape, fei-tsui jade, with emerald green clouding, and artistically undercut with two jolly figures amusing themselves in the lotus fields. Brilliantly polished. Enclosed in a hardwood stand. Height, 4 inches.

537 Buddhist Rosary (Han)

Eighteen beads in water fruit shapes of yellowish white jade, each carved with a fine design, with an addition of jade pendants, such as fish, bell, etc. A rare production of unusual beauty.

538 Old Jade Ornament (Han)

Grayish, black and yellowish clouding jade, round shape, with a broad hole in centre. Brilliantly polished. Enclosed in a beautiful hardwood stand.

Height, with stand, $12\frac{1}{4}$ inches; width, $7\frac{1}{2}$ inches.

Fourth Afternoon

539 Rare Old Jade Paper Knife (Chien Lung)

Pure white jade in the form of a knife, graceful and interesting specimen, with a long handle. Brilliantly polished. Length, $11\frac{1}{4}$ inches each.

540 Crystal Perfume Box (Chien Lung)

Clear white crystal, beautifully carved, a quail in a resting position; erect head and finely feathered. Wonderful and delicate specimen. Height, $3\frac{1}{2}$ inches.

541 Crystal Bird (Chien Lung)

Beautifully carved in the shape of a mother bird with her young ones, and with a few stalks of wheat in their mouths. Finely carved in brownish white crystal.

Height, 3 inches; width, 4 inches.

542 Fancy Crystal Perfume Box (Chien Lung)

Finely carved, a quail bird in resting position, its head turned, the feet and feathers well modelled and lifelike. Exceptionally clear and cleverly cut.

Height, 4 inches; width, $3\frac{1}{2}$ inches.

543 Extraordinary Tall Coral Carved Figure (Chien Lung)

Elaborately carved, two happy fairies; one is standing on a rock holding a ju-i and a bundle of flowers in her hands, while the other is a bright, handsome fairy, having a flower vase and a sacred gourd in her hands and looking backward to a young lad; the lad's hand also holds a bird and flowers, with a smiling, rejoicing face. At the foot of a tree is a lion with a bold and fierce countenance. Each has a different manner, but all resemble nature. This group of portraits is so beautifully carved that they appear very life-like. Such figures as these could not have been carved without great care and industry.

Height, $6\frac{3}{4}$ inches.

[See Illustration]

544 Pair of Delicate Ivory Ornaments (Chien Lung)

Graceful bamboo root shape. Carved in high relief on the surface are swallows and grasshoppers under the shade of bamboo leaves. At the back are sprays of lotus and chrysanthemum flowers, whereon are lizards, toads, crabs and kingfishers. Length, $2\frac{1}{2}$ inches; width, $1\frac{1}{2}$ inches.

545 Pair of Fancy Ivory Ornaments (Chien Lung)

In the shape of bamboo roots. Carved in high relief on the front are birds, butterflies and sparrows. At the back are sprays and blossoming lotus flowers, with crickets, spiders and other insects.

Length, $2\frac{1}{2}$ inches; width, $1\frac{1}{4}$ inches.

546 Agate Duck (Chien Lung)

The stone waxen, whitish and gum color; carved in bold relief is a duck with webbed feet in a lifelike manner floating on the surface of the water. A fine and wonderful example, and brilliantly polished.

Height, $4\frac{1}{4}$ inches; width, $5\frac{1}{4}$ inches.

547 Pair of Artificial Jade Bouquet Flowers (Chien Lung)

Various kinds of old jade forming artificial flowers. Wonderful workmanship, with sprays, flowers and spreading branches and leaves, all in a natural manner. Enclosed in a cloisonne quadrilateral shaped flower pot; beautifully decorated with fancy tiny flowers.

Height, $19\frac{1}{2}$ inches.

548 Jade Goblet (Han)

This goblet of jade stone was excavated from an old grave. The whole body is decorated in relief, showing dragons dancing in the clouds.

Height, 6 inches; width, 3 inches.

Fourth Afternoon

549 Jade Ornament (Chien Lung)

Three birds resting on lotus flowers, representing various movements in a natural life-like manner; one is chirping, while the others are picking among the leaves. Greenish jade, softly polished and exquisitely carved.

Height, $4\frac{1}{2}$ inches; width, 6 inches.

550 Remarkable Crystal Figure (Chien Lung)

Tall standing figure of Kuan-Yin, with a cowl on her head; in her hands she is holding a vase. Handsome complexion, and the robes are well draped in a significant attitude. Exceptionally clear crystal. Has carved lotus flower teakwood stand.

Height, 9 inches.

551 Remarkable Crystal Vase (Chien Lung)

Fine, pure white crystal, with a dome cover; cover top is cut with four loose rings; side have lion's head with rings. Flat, sloping shoulders; body has beautifully carved with fancy floral patterns of growing plum flowers in blossom. Has silver inlaid teakwood stand.

Height, with stand, $6\frac{1}{2}$ inches; width, $5\frac{1}{4}$ inches.

552 Exceptional Agate Boat (Chien Lung)

Finest jasper agate with reddish black coloring. Strongly modelled, a man is sailing homeward in a boat with his wine jar in front on the deck; the boatman's head turned toward a passenger with a smiling expression. Such wonderful work is impossible to be carved if the ideal of the artist is not superior and highly inspired.

Height, 3 inches; width, $5\frac{1}{2}$ inches.

553 Agate Ornament (Chien Lung)

Carved in the form of leaves, lotus flowers, swan and insects. Golden reddish agate, with tinges of iron rust. Has a beautiful carved wood stand. Height, $2\frac{1}{2}$ inches.

554 Extraordinary Large Agate Vase (Chien Lung)

Cauldron shape, with broad, high shoulder and flanged lip, four bold dragon-head handles with loose rings, and dome cover; cover knob has carved standing lion. Body beautifully carved in delicate floral designs in a high relief. Yellowish agate colored. Has a silver inlaid teakwood stand. Height, 10 inches; diameter, $4\frac{1}{2}$ inches.

[*See Illustration*]

555 Remarkable Crystal Vase (Chien Lung)

In the form of an ovoidal vase, slightly flattened; on the lip and cover four loose rings in high relief. Beautiful carved fancy floral patterns on both sides. The crystal shows delicate, pure, soft substance, and is brightly polished. Has a silver inlaid carved teakwood stand.

Height, $6\frac{1}{2}$ inches; width, $4\frac{1}{2}$ inches.

556 Jade Ornament (Chien Lung)

Unusual shape, large greenish jade in a bat form, carved in high relief with a landscape, buildings, figures, fishing boats, bridges, birds and trees. On the lower part hang small fancy objects, of varying shapes and different kinds of jade. This ornament hangs in a hardwood frame.

Height, $23\frac{1}{2}$ inches.

557 Jade Ornament (Chien Lung)

Of unusual shape, with a large greenish jade in the shape of a hat, carved in high relief with a scene depicting mountains, deer, palace, clouds, storks and trees. On the lower part hang tiny fancy objects, varying shapes and of different kinds of jade. The ornament hangs in a hardwood frame and stand. Height, 22 inches.

Fourth Afternoon

558 Jade Ornament (Chien Lung)

Of unusual shape, with a large greenish jade in a graceful bat form, delicately carved in high relief, depicting a landscape, mountains, buildings, figures and trees. On the the lower part hang tiny fancy objects, varying shapes of pure white jade, all in delicate openwork.

Height, $2\frac{1}{4}$ inches.

559 Mandarin Court Beads

Made from peach stones. Carved in openwork in high relief, complete in 104 pieces.

560 Mandarin Necklace

Beads of pierced and carved nuts; gilt silver mounted pendant.

561 Turquoise Necklace or Rosary

Long chain of 108 balls or beads, softly polished and brilliant coloring.

562 Mandarin Necklace

Pink early stone beads with large jade stops and rich green jade pendant, set off by silk braiding, showing the swastika symbol.

563 Mandarin Court Beads

Turquoise stone, complete in 108 pieces, skilfully carved and brilliantly polished.

564 Mandarin Court Beads

Best grade of amber, complete in 108 pieces. Carved in high relief and brilliantly polished.

565 Princess Necklace of Coral and Jade

Imperial household production of unusual beauty. The necklace consists of 108 beads of pink coral, $\frac{1}{2}$ -inch in diameter, of brilliant reddish tourmaline, and 4 large beads of green jade, sometimes called fei-ts'ui jade, and 3 pendants of early stone beads, pink and aubergine tourmaline, and a long pendant with fei-ts'ui jade and pink drop, set off by silk braiding showing the swastika symbol. All drops in gold filigree mounts inlaid with kingfisher feathers. feathers.

566 Extraordinary Fine Jade Flowers in Cloisonne Jardiniere (Chien Lung)

Exquisite and beautifully carved, representing chrysanthemum flowers and leaves in warm grayish green and white, deep blue, light green, pale yellow and amber color, planted in quadrilateral cloisonne jardiniere. The flowers are natural and attractive; combining skill and art of rare excellence.

[*See Illustration*]

566a Extraordinary Fine Jade Flowers in Cloisonne Jardiniere (Chien Lung)

Companion to the preceding.

[*See Illustration*]

567 Soft Stone Figure (Chien Lung)

Old soft stone, carved in high relief. Has closed eyes and a happy expression, holding a cane and a bag, in the right hand a rosary. Robes are skilfully draped, exposing the broad chest of the deity. Height, $4\frac{3}{4}$ inches.

Fourth Afternoon

568 Remarkable Soft Stone Figure of Kuan Yin (Chien Lung)

Natural soft stone with trace of light yellow, which is so particularly admired by Chinese connoisseurs. The goddess stands in a contemplative attitude, one hand holding the sacred vase, hand and fingers very delicate, beautiful face, with hair coiled on head. Robes are voluminous and particularly well sculptured. Has an elaborate worked carved stand. Height, $6\frac{3}{4}$ inches.

569 Beautiful Fish Kong (Chien Lung)

Heavy stone weight porcelain of sonorous tone. Deep ovoidal form, with mammoth lip. Body boldly undecorated. Light translucent greenish color of celadon glaze. Has four-legged carved teakwood stand.

Height, 20 inches; diameter, 16 inches.

570 Fish-Roe Vase (Chien Lung)

Oviform body, slightly sloping shoulder, high neck and broad foot. Hard, white sonorous paste, the body coated in thick brilliant fish-roe glaze (called peacock green by the Chinese). Fine crackle, and the glaze brought to the base. Height, 8 inches; diameter, $3\frac{1}{2}$ inches.

571 Fancy Three Color Basin (Ming)

Thin sonorous, porcelanous. Shallow body and expanding mouth. The exterior beautifully pencilled with cherry trees and squirrels, the interior decorated with tiny fancy flowers, in the brilliant enamel of the Ming three colors.

Height, $1\frac{1}{2}$ inches; diameter, $4\frac{1}{4}$ inches.

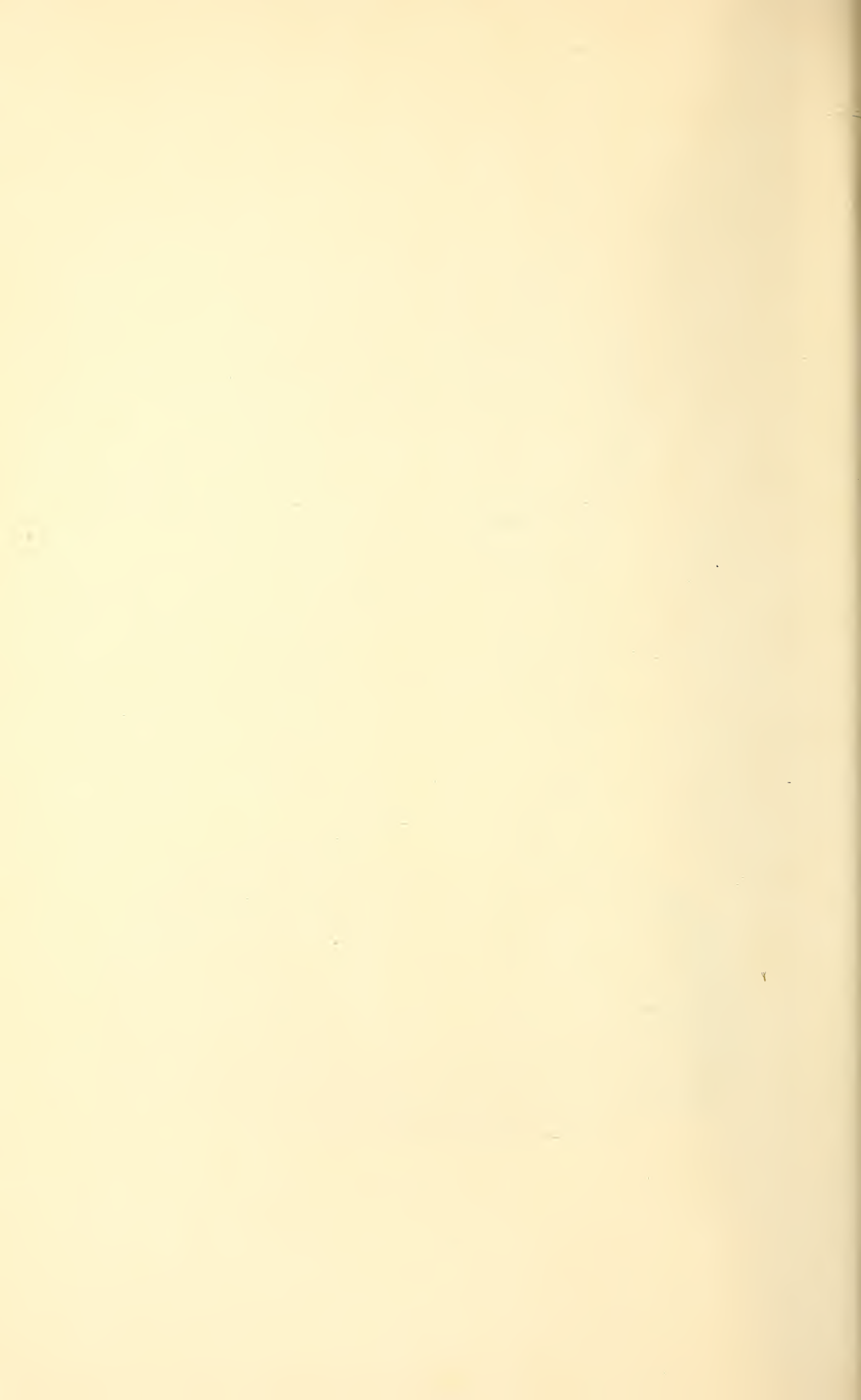
572 Fish-Roe Green Bottle (Chien Lung)

The body coated all over with fish-roe green, faintly crackled, the glaze carried in the interior of neck and under base; graceful form.

Height, $6\frac{1}{2}$ inches; diameter, $3\frac{3}{4}$ inches.



No. 593



573 Antique Chinese Imperial Rug

Soft close, silky pile. Ground of thick deep green tone. Wide Imperial yellow borders around two sides and rich reddish lines. The field filled with floral medallions in reddish, black and white. Corners of four ends cut with trefoil edge. This rug was a present by the Mohammedians in the late Ching Dynasty and it is specially woven. Taken from the Palace of Peking during the Revolution. Very rare.

Length, 16 feet 4 inches; width, 13 feet 7 inches.

574 Celadon Statuette (Sung)

The Buddha is resting against a large upright rock, showing a noble face, long beard; one hand resting on the knee, while the other held in upright position. Wears a long decorated robe, head has a head-dress. The whole body is covered with rich greenish celadon glaze.

Height with stand, $7\frac{1}{2}$ inches.

575 Large Fish Kong (Yung Ching)

Ovoid, deep body, open mouth and broad foot. Sonorous, hard porcelaneous. The whole body coated in rich and brilliant turquoise blue glaze.

Height, 16 inches; diameter, $26\frac{3}{4}$ inches.

576 Coral Red Vase (Yung Ching)

Oviform, deep body, broad foot, tapering neck with spreading mouth. Of thin, sonorous porcelain and beautifully covered with rich and brilliant coral red glaze; of graceful shape. Rare.

Height, $8\frac{1}{2}$ inches; diameter, 4 inches.

Fourth Afternoon

577 Remarkable Coral Red Wine Cup

Deep round body, slightly narrow foot and spreading mouth. Of semi-eggshell porcelain. Beautifully painted in rich and brilliant coral red glaze.

Height, 3 inches; diameter, $3\frac{1}{2}$ inches.

578 Coral Red Bottle (Yung Ching)

The body glazed in rich and brilliant coral red. Graceful form.

Height, $7\frac{3}{4}$ inches; diameter, $3\frac{3}{4}$ inches.

579 Pair of Important Raised Porcelain Bottles (Chien Lung)

Full globular body, slightly tapering neck. Hard, thin, sonorous, porcelanous ware and coral red, illustrating an interesting history of Han Dynasty. Figures are beautiful and of varying types, the garments are glazed in the brilliant enamel colors of the famille rose. Underneath bears a mark of period.

Height, $8\frac{1}{2}$ inches; diameter, $4\frac{3}{4}$ inches.

[*See Illustration*]

580 "The Eighteen Lohan Album" (Kaing Lun)

This album was one of the Royal Collection in the palace. There are altogether 20 pages, the first page and the last one are the preface and complimentary comment to the Buddha, the Chinese characters are extraordinary well written, the other eighteen pages are the figures of the Eighteen Lohans, who are the Buddhas. The faces are exceedingly well expressed and uncommonly quaint. The artist must have a wonderful imagination to draw them. This album was painted in the time of Kaing Lun of the late Dynasty. The artist used a hard pen to draw them, then he filled the gold powder on them so it was a unique art, quite different from other drawings of the powder class. The album is gold powder on blue paper throughout. The color of the gold is still extraordinary fine.

581 Painting on Satin (Yuan)

Mountain Scenery, by Shund Tse Tsau. This picture was painted by an artist of the Yuen Dynasty. The whole picture represents a mountain scene of which the artist did not give a title. It is exceedingly fine in detail and was painted from imagination, without any actual objects to work from. Three large Buddhas in one part of the scene are the very uncommonly points of painting in this style. The color is still exceedingly fine, considering the age of the painting.

Length, 13 yards; width, 13½ inches.

582 Exceptional Pen Holder (Yung Ching)

Imperial palace piece. Graceful ovoid shape. Hard, sonorous white paste, exquisitely decorated with blossoms of plum plants of great age, the orchid's bright, glazed with the darker colors for the branches and pink and white for the blossoms. Such a picture is a good representative of a real Sung Dynasty painting, for the pen was used freely and the composition was natural. Under the bottom the six character mark of Yung Ching in blue within a blue double square.

Height, 5½ inches; diameter, 6½ inches.

[*See Illustration*]

583 Colored Tapestry (Chien Lung)

This beautiful tapestry on a green ground, and with pretty sprays of blossoms of delicate flowers for the pattern; it was, like other embroideries of its kind, made for the Imperial household during the reign of Emperor Chien Lung. Length, 63½ inches; width, 26½ inches.

584 Chun Yao Bowl (Ming)

Hard, white paste. Short base, expanding edge in a graceful six-sided shape, body covered with brilliant bluish color of Chun Yao glaze and boldly undecorated.

Height, 2¼ inches; diameter, 4¾ inches.

585 Large Statuette of Kuan Yin (Chien Lung)

Hard, thin, sonorous, porcelanous. The Goddess of Mercy is half seated on a mat, with one leg doubled under the other, partly raised. Head has usual hair dressing and covering; on breast is necklace and jewel pendant. Robes are gracefully flowing and the variety of color is very unusual. The hands and foot are pencilled in gold color, and all over the robe are beautiful cloud forms in the brilliant enamel colors of the famille rose.

Height, $7\frac{1}{4}$ inches; width, $10\frac{1}{2}$ inches.

586 Group Gourd Shape Chun Yao Vase (Yuen)

This vase was made at Yuchow of the Honan province, in the Yuen Dynasty. In the form of three gourds joined together and curiously decorated with a ribbon belt knob on the body. Glazed in a thick, brilliant of Chun Yao coloring. It is remarkable for its wonderful size and its age, which is well over many hundred years. Has carved teak-wood stand.

Height, 8 inches.

[*See Illustration*]

587 Beautifully Decorated Bottle (Kang Hsi)

Bulging body, with short neck, spreading mouth and broad foot. Pure white hard paste. Decorated with sprays of blossoms and fruit trees, overhead there are flying birds; key shaped borders on the base; artistically painted and glazed in rich and brilliant five colors.

Height, $9\frac{1}{4}$ inches; diameter, $4\frac{1}{4}$ inches.

588 Exceptional Ivory Carved Screen (Chien Lung)

In eight leaves or panels, and when opened out forms a complete picture with a wealth of detail, both in front and back, which would take a volume to describe. Made of ivory, elaborately carved with extraordinary vigor and yet with thoroughly artistic merit, depicting various kinds of beautiful flowers, also birds and butterflies. The screen is divided into five panels, two being ivory, the other three of Canton enamel, filled with floral designs in brilliant enamel colors of famille rose. At the back of each panel is writing in both ordinary and seal characters. The surrounding lacquer and the Greek fret pattern edge deeply carved and colored. Obtained from a palace in Peking.

Each panel, height, $37\frac{1}{2}$ inches; width, 50 inches.

[*See Illustration*]

589 Tall Five Colored Vase (Kang Hsi)

Club shape, long oviform body, high shoulder, short neck, the mouth slightly extended by a deep flange lip. Hard paste of musical tone, glazed throughout in the fairest green of soft brilliant, exquisitely beautiful decoration in Kang Hsi five colors; the body and neck decorated with flowers, sprays and detached buds and blossoms, flying butterflies and including daffodils, heliotrope and hydrangeas, morning glories and orchids, the cocks' comb and hibiscus, pear blossoms, poppies, dragon lilies, the peony, lotus and chrysanthemum, japonicas and daisies, peach and cherry blossoms, carnations, and on the shoulder are panelled four delicate panels, each of the panels are beautifully decorated with the blossoms of the season. Along the neck are also decorations of fancy floral designs, and a light ridge line circle the mid-neck. Underbase bears a double blue circle.

Height, 17 inches; diameter, 8 inches.

Fourth Afternoon

590 Tall Five Colored Vase

Remarkable specimen; perfect in every respect and flawless. Imperial palace piece. Club shape, with short neck, hard, heavy white paste. Elaborate decoration with four panels, each representing landscapes, blossoming flowers, birds, rocks and figures. Swastika lattice borders and all glazed in rich brilliant five colors of the Kang Hsi reign. One cannot distinguish that they are painted in the porcelain. A good example of a Sung Dynasty painting, and doubtlessly a masterpiece.

Height, $17\frac{1}{2}$ inches; diameter, $7\frac{1}{4}$ inches.

[See Illustration]

591 Standing Stone Figure

Figure of standing Buddha in high relief, with graceful folds in drapery. Some of the glazes are still visible. Said to be found in an ancient temple.

Height, 17 inches.

592 Stone Terminal (The Six Dynasties)

Pointed tall arch; figure shows a Buddha standing on a symbolic base; fine complexion, the left hand in a downward position, while the other holding a ju-i. Modelled in high relief, with graceful folds in drapery. The background and part of Buddha is coated with brilliant flowing rich red and green coloring of an ancient hue. On the base there are engraved a great many inscriptions, which prove the Buddha's biography and giving the year and date of construction.

Height, $19\frac{1}{2}$ inches.

593 Rare Large Stone Bust (Wei)

Representing a Buddhist head, wearing a Gautama cape, in the center of which is a tiny figure seated on a lotus flower. The eyebrows are thick, ears long. The trace of the coloring is still visible. Heavy carved teakwood stand.

Height with stand, 19 inches.

[See Illustration]

594 Stone Buddha (Ming)

Seated on a lotus flower base, and both hands resting on the breast; flowing robes, in which is modelled the golden glaze which is still tracable. Height, 10½ inches.

595 Old Stone Bust (Tang)

Head with characteristic nodular hair and long-lobed ears, and has crown. Height, 11½ inches.

596 Old Stone Bust (Tang)

The head is particularly well modelled and full of character, the stern face has the prolonged ear-lobes of wisdom. Height, 10½ inches.

597 Stone Bust (Wei)

The head representing a goddess; long-lobed ears, beautiful face, her hair dressed high over her head, without cowl, and shows a natural ancient stone coloring.

Height, 13 inches.

598 Stone Bust (Wei)

The head of Buddha, representing a visage of venerable expression, and wearing a Buddhist crown, on the center of which adorned a small figure. Original stone colors.

Height with stand, 22½ inches.

599 Stone Bust (Wei)

The head of a Buddhist. A noble face well modelled, and showing the natural coloring of stone.

Height with stand, 15 inches.

Fourth Afternoon

600 Remarkable Tall Standing Stone Statuette (The Six Dynasties)

Standing figure of goddess on a lotus flower base, in flowing robes, elaborately carved and finely engraved; shows a beautiful complexion, bare foot protruding from her robes, the left hand holds a sacred vase, while the other is holding a bundle of flowers. Flowers in relief, her hair-dress and Oriental ornaments carved and pierced, hang about her breast. At the base can be found the inscriptions of the year and date of the Six Dynasties. Connoisseurs will appreciate this remarkable statuette.

Height 5 feet 1 inch.

[*See Illustration*]

AUGUSTUS W. CLARKE,
Auctioneer.



SMITHSONIAN INSTITUTION LIBRARIES



3 9088 01768 1529



3133